

CATALOGUE

of projects

FOR DECORATING WALLS AND CEILINGS

Gaudi
interior mouldings

FOR DECORATING WALLS AND CEILINGS

CATALOGUE
of projects

2017



deep and sharp
ornament



extra white



can be painted
any color



easy to install



moisture resistant



made in Russia

Décor LTD is the largest manufacturer of architectural décor made of foamed polyurethanes in Europe.

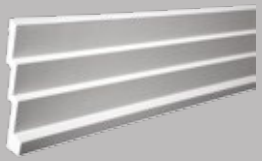
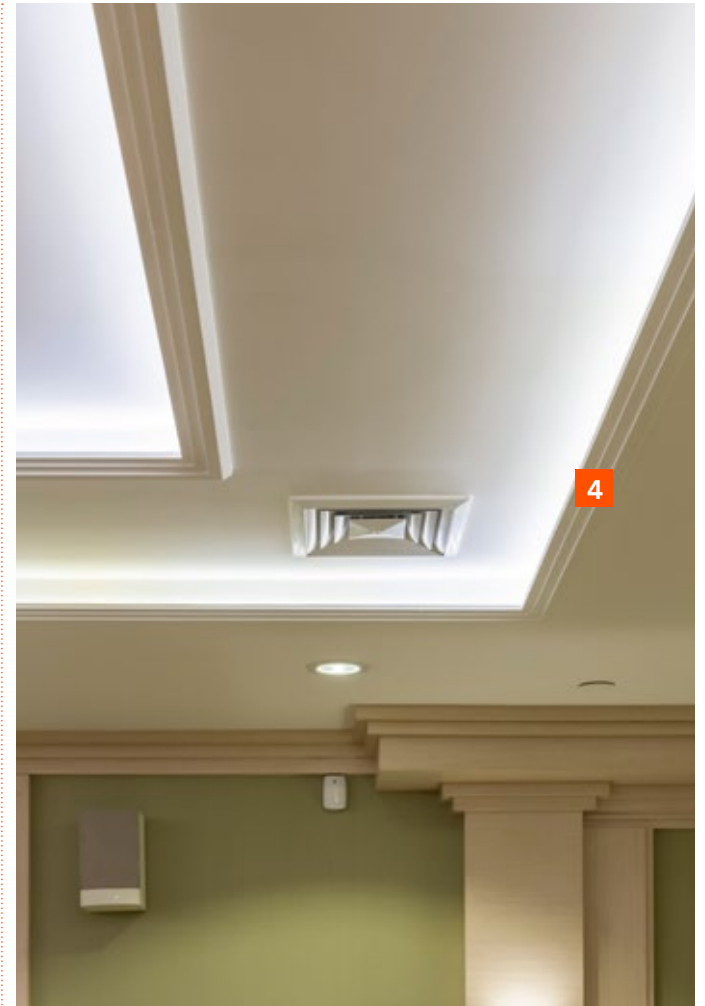
The plant is located in Chekhov district in Moscow region. The working space of the factory is 20,000 m², number of employees is over 600 people. The company is the owner of the industrial space.

Décor LTD is a supplier of: Leroy Merlin East, OBI, Tvoy Dom, and has representative offices in 101 cities of Russia and CIS. Logistic center in Rotterdam is operating since 2015. Décor LTD products are presented in Germany, France, Italy, Spain, Portugal, Czech, Romania, Hungary, Poland, The Baltic states, Bosnia and Herzegovina.

Own Russian logistic center, which area is more than 7,000 m², allows to deliver the goods to the customers in short terms.

Décor LTD manufactures architectural décor both for interior and facade use. The collection of facade décor is developed by Moscow Institute of Architecture according to Russian specifics. Interior collection contains 532 elements, facade collection contains 316 elements.

Décor LTD products are presented under Evroplast and Gaudi trademarks.



1 Cornice
1.50.145

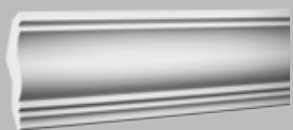
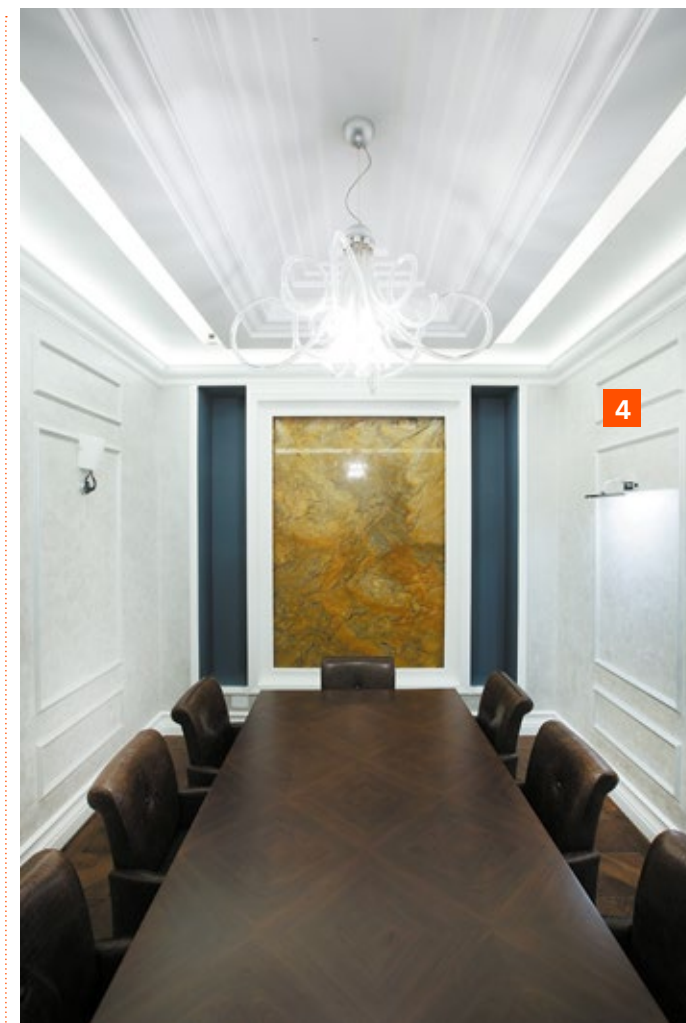
2 Moulding
1.51.301



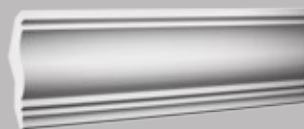
3 Cornice
1.50.145



4 Cornice
1.50.145



1 Cornice
1.50.273



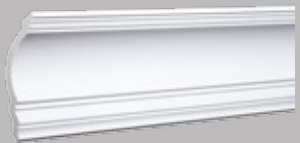
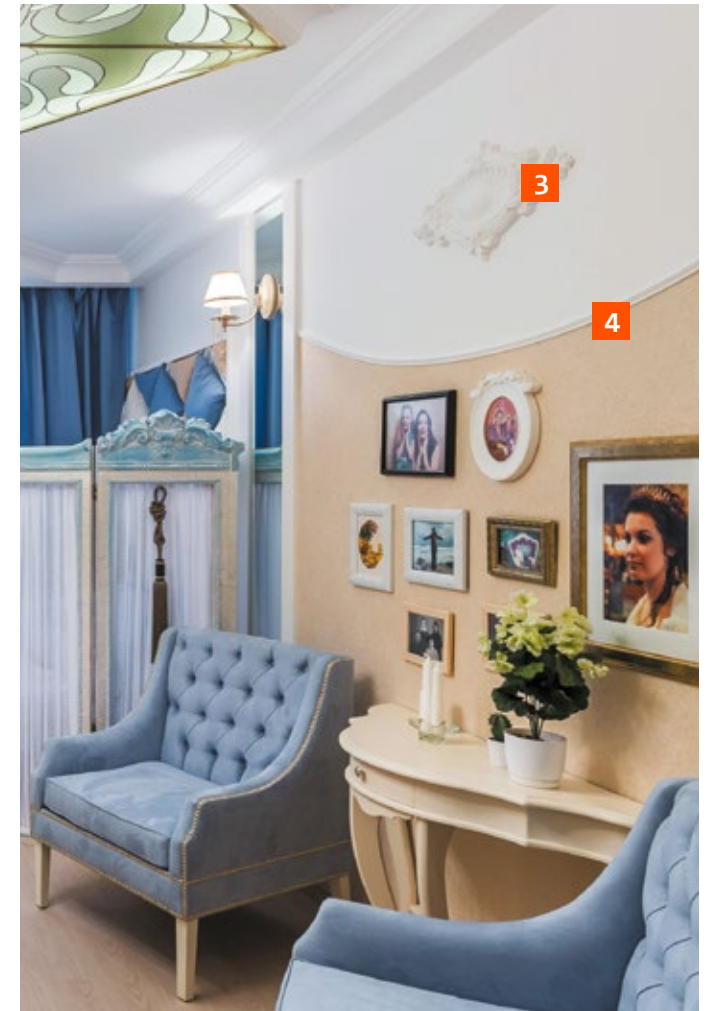
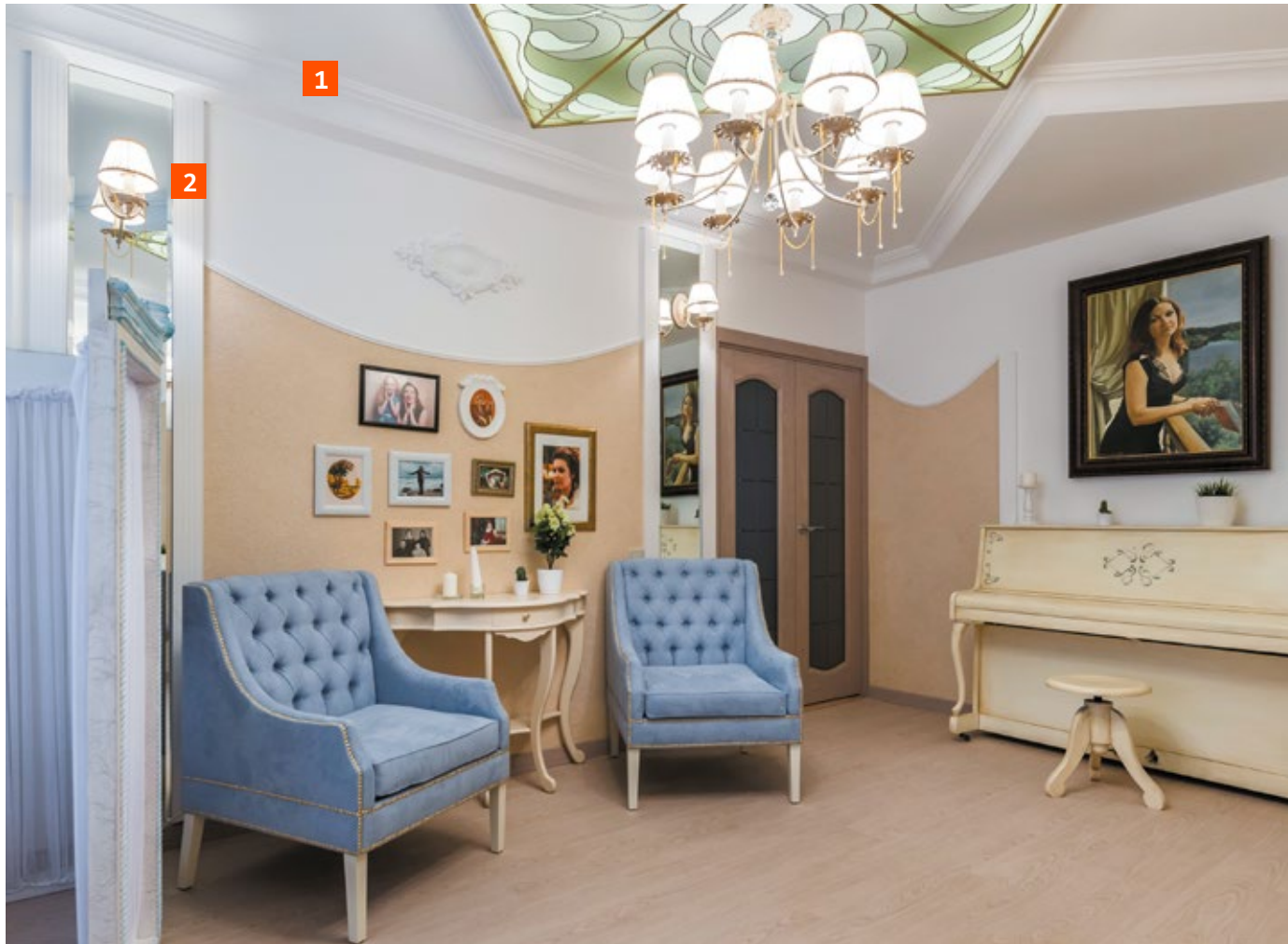
2 Cornice
1.50.273



3 Floor moulding
1.53.102



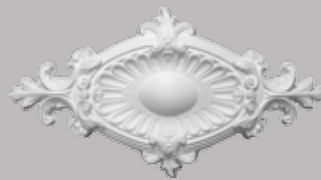
4 Moulding
1.51.301



1 Cornice
1.50.108



2 Moulding
1.51.316



3 Ceiling rose
1.56.043

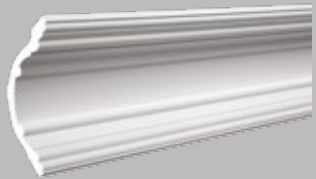
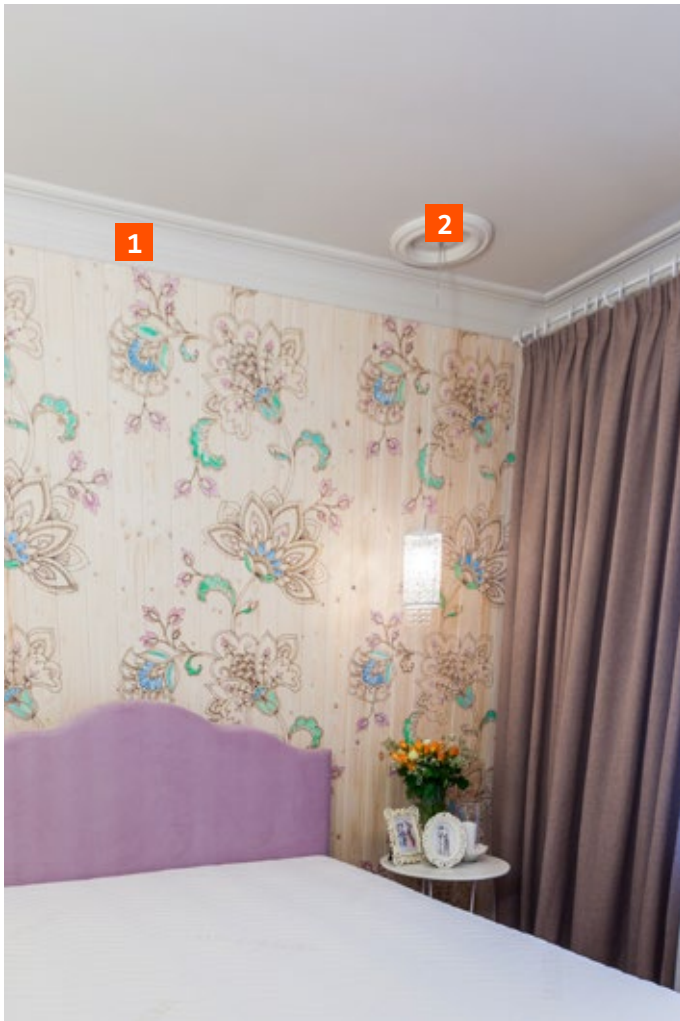


4 Flexible Moulding
1.51.321



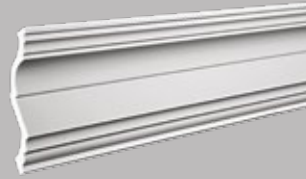
1 Ceiling panel
1.57.001

2 Cornice
1.50.256



1 Cornice
1.50.168

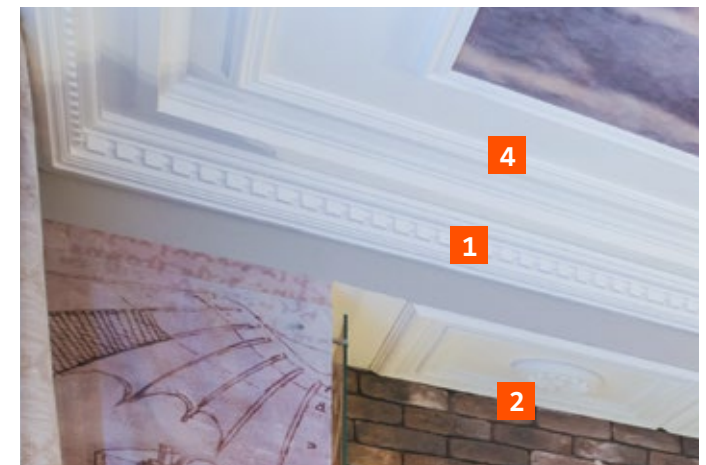
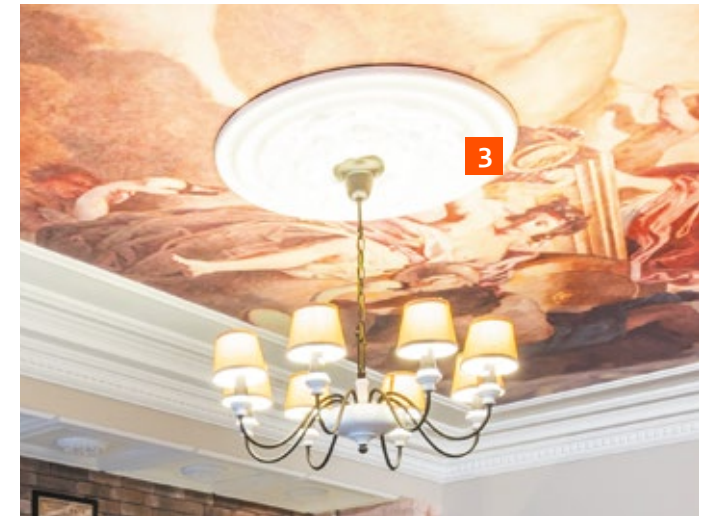
2 Ceiling rose
1.56.006



3 Cornice
1.50.254



4 Cornice
1.50.254



1 Cornice
1.50.109



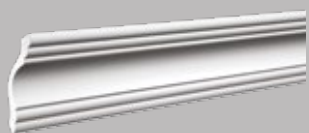
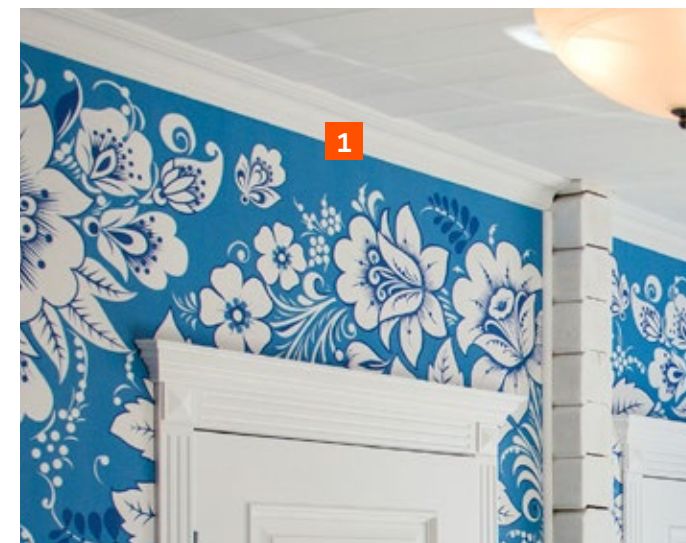
2 Ceiling rose
1.56.010



3 Ceiling rose
1.56.039



4 Moulding
1.51.301



1 Cornice
1.50.102

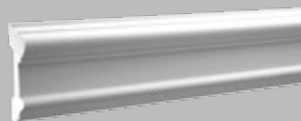
2 Ceiling panel
1.57.002



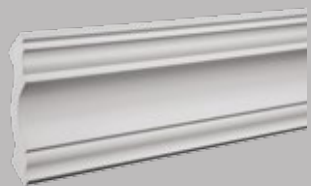
1 Ceiling rose
1.56.026



2 Square
1.54.001

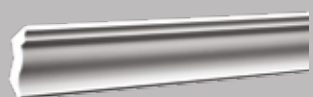


3 Moulding
1.51.307

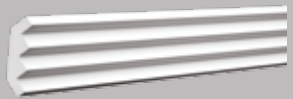
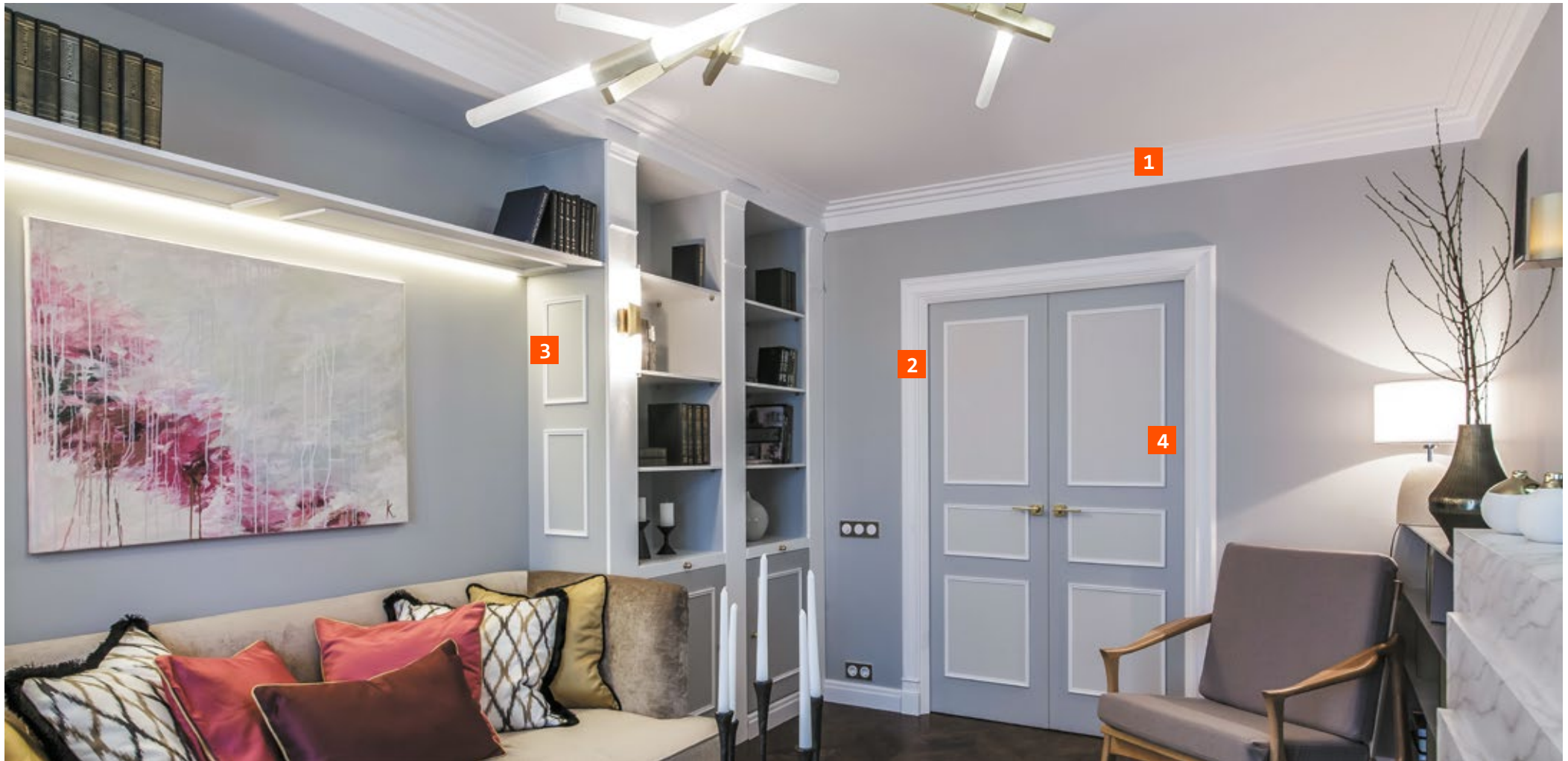


1 Cornice
1.50.113

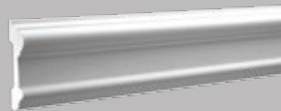
2 Base
1.54.010



1 Cornice
1.50.150



1 Cornice
1.50.140



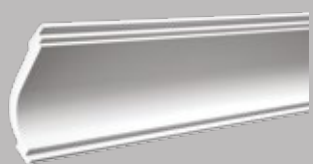
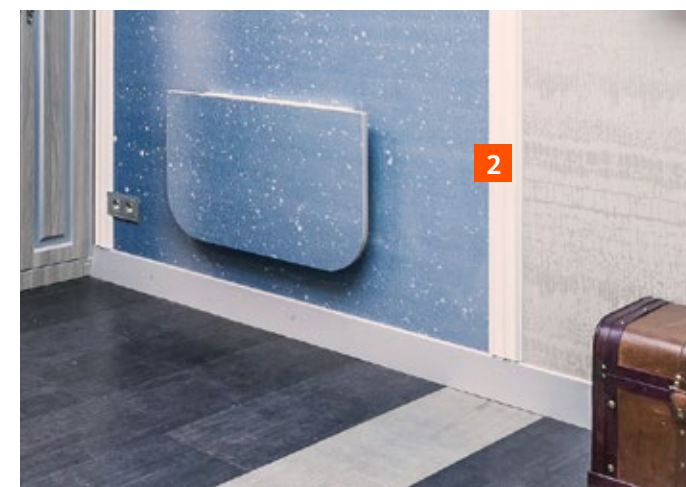
2 Moulding
1.51.307



3 Moulding
1.51.346

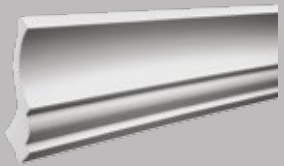
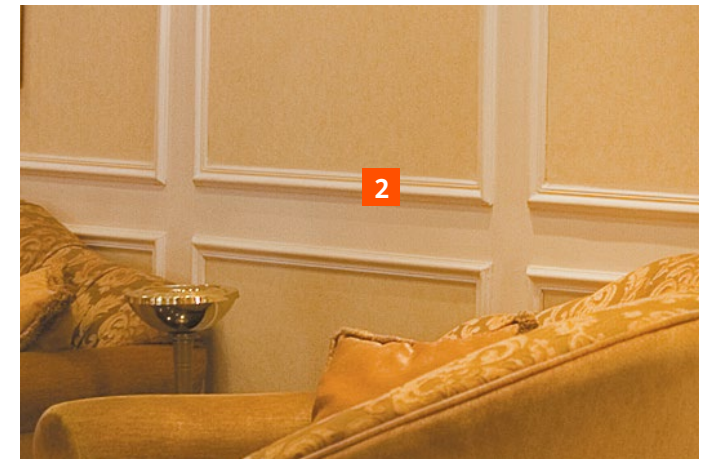
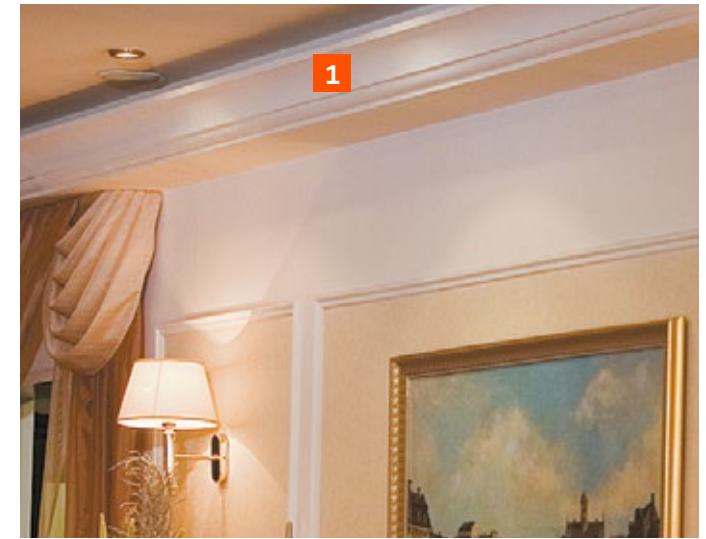


4 Moulding
1.51.321



1 Cornice
1.50.170

2 Moulding
1.51.310

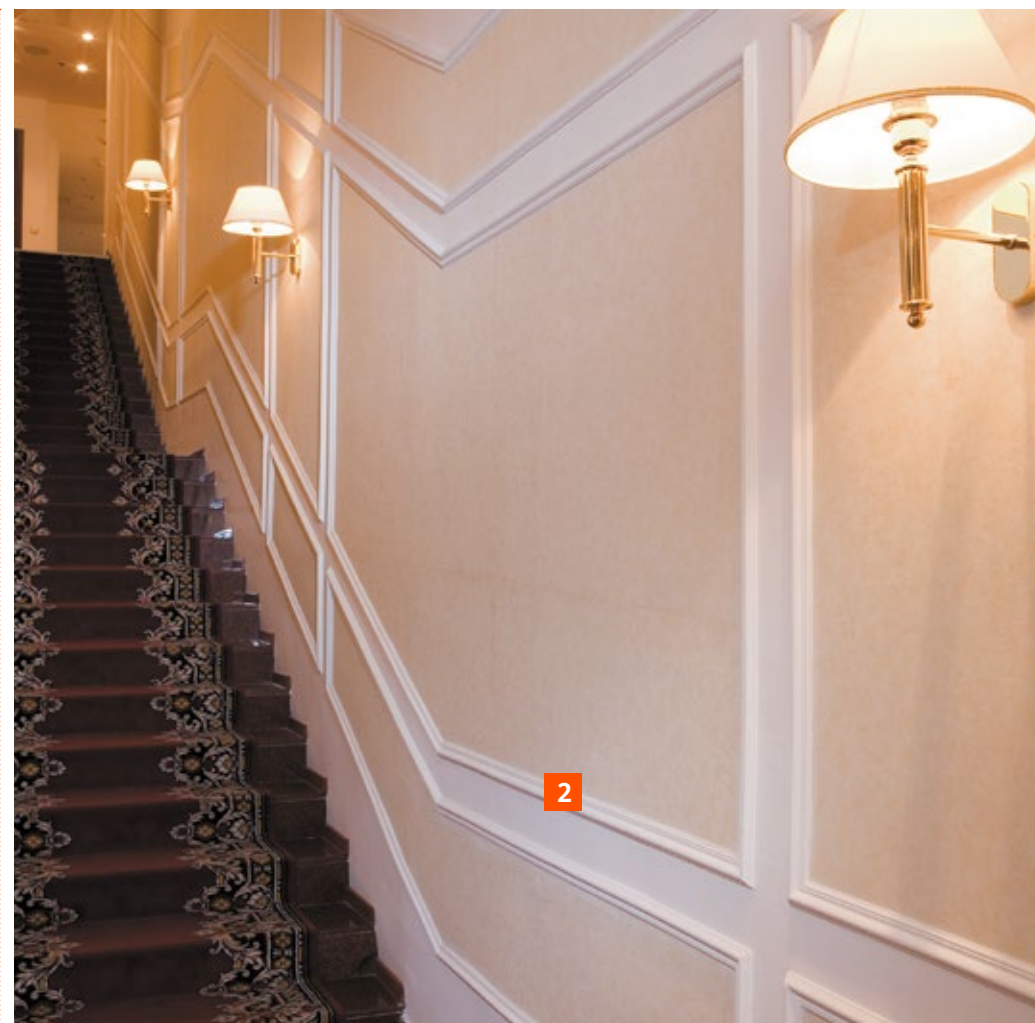


1 Cornice
1.50.221

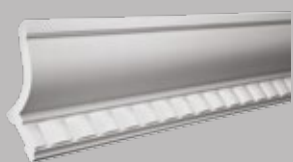
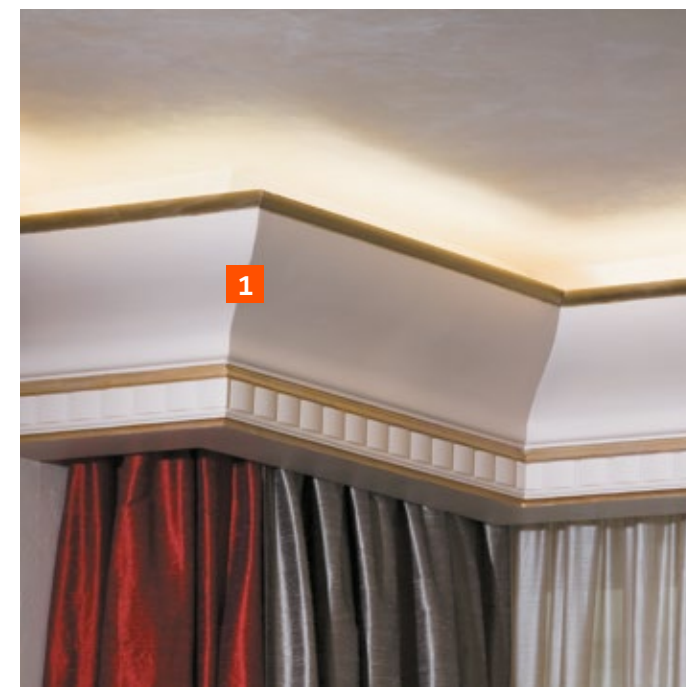
2 Moulding
1.51.301



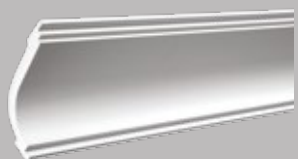
1 Moulding
1.51.380



2 Moulding
1.51.301



1 Cornice
1.50.210



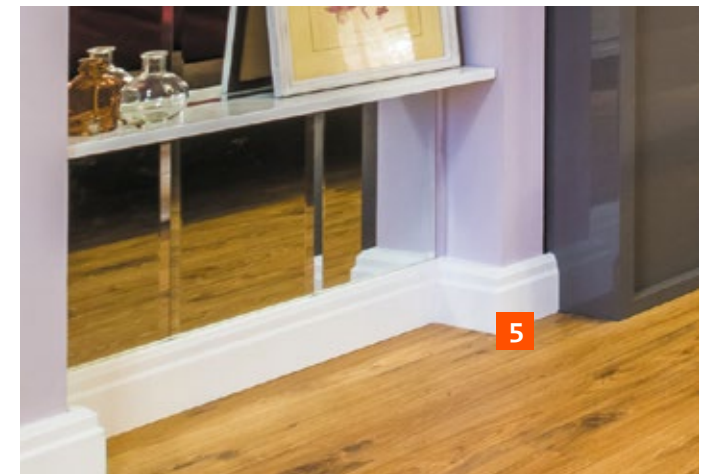
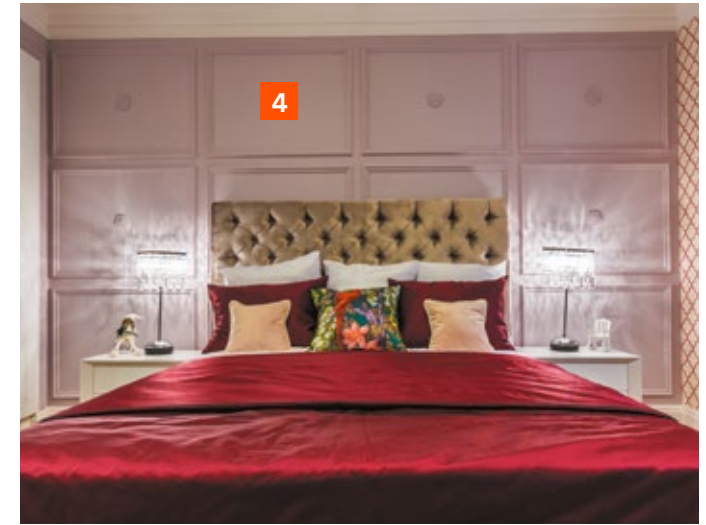
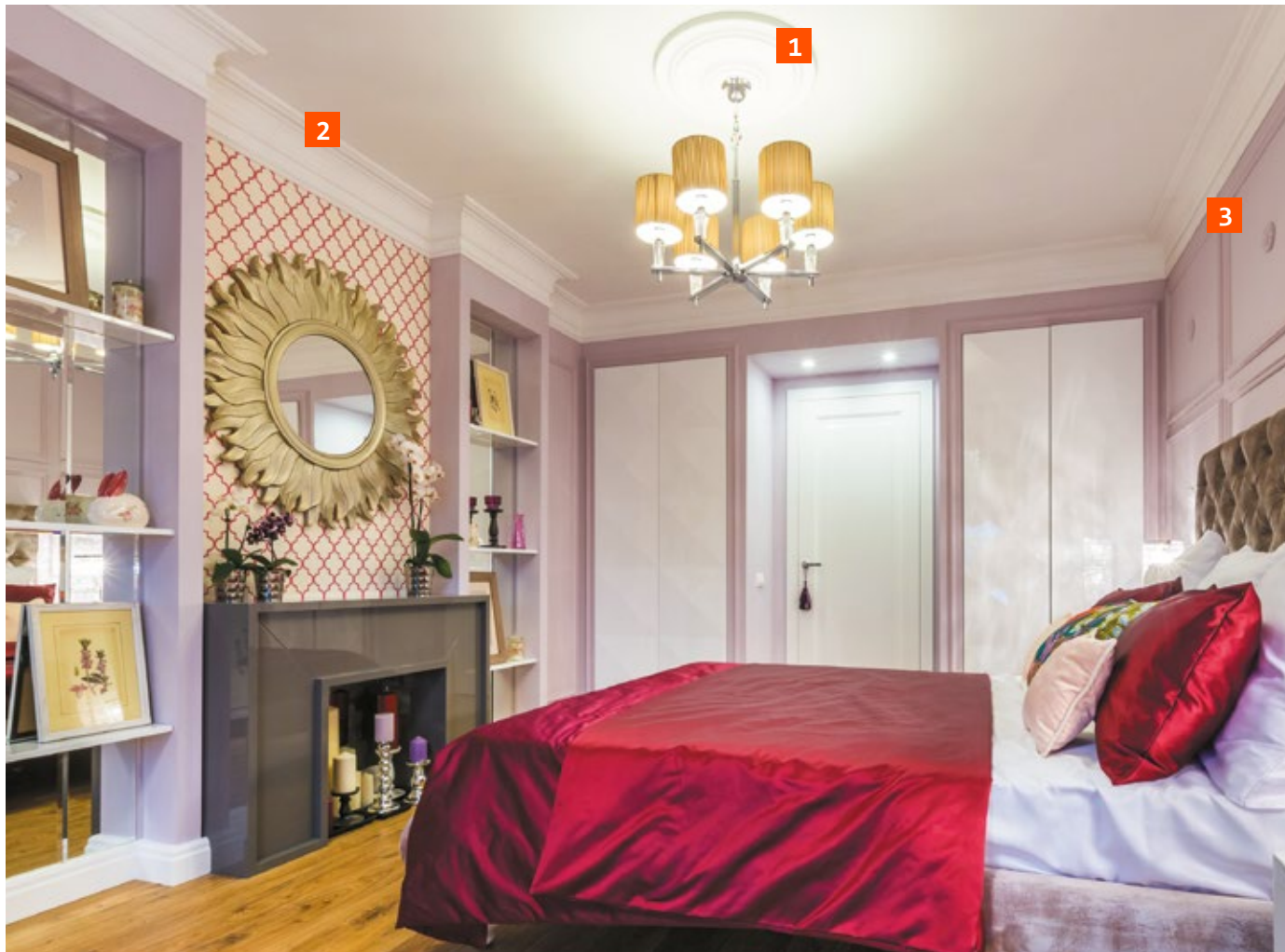
1 Cornice
1.50.170



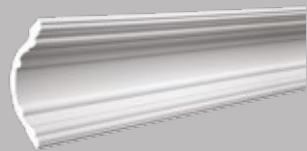
2 Moulding corner
1.52.301



3 Moulding
1.51.301



1 Ceiling rose
1.56.015



2 Cornice
1.50.168



3 Moulding
1.51.301



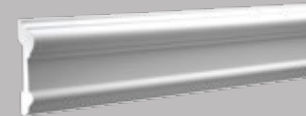
4 Ornament
1.60.017



5 Floor moulding
1.53.101



1 Moulding
1.51.316



1 Arch frame
1.55.001

2 Arch frame
1.55.002

3 Keystone
1.55.005

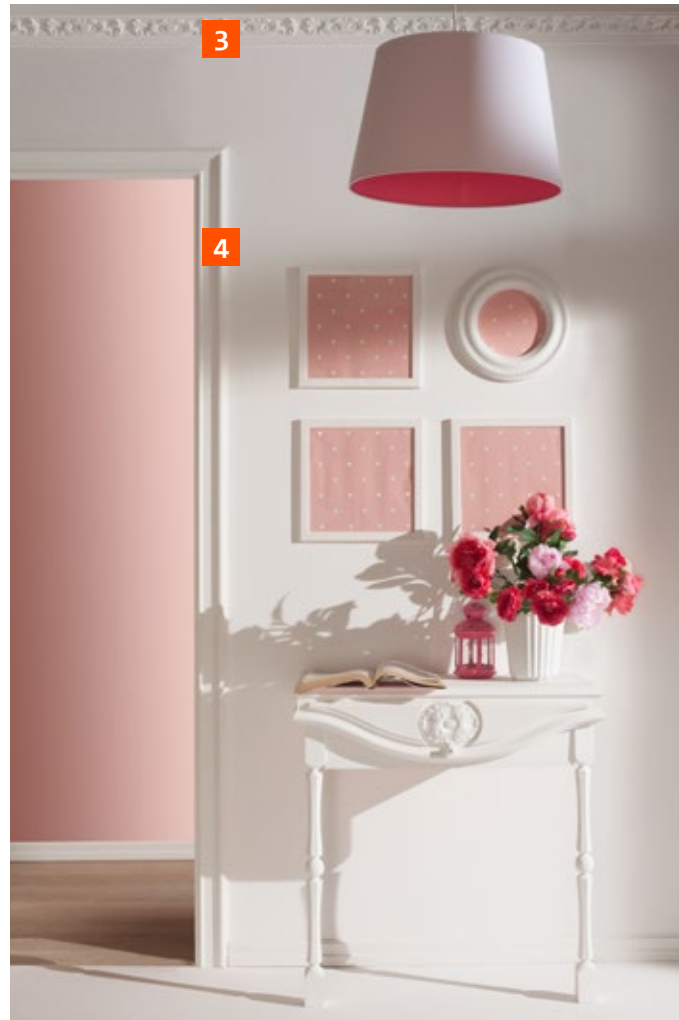
4 Arch frame
1.55.003

5 Moulding
1.51.307



1

2



3

4

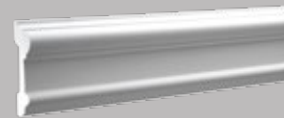


5



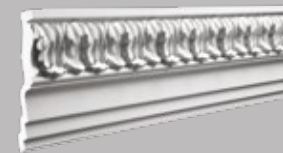
1 Moulding
1.51.318

2 Floor moulding
1.53.101

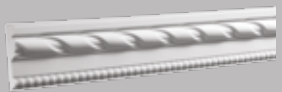
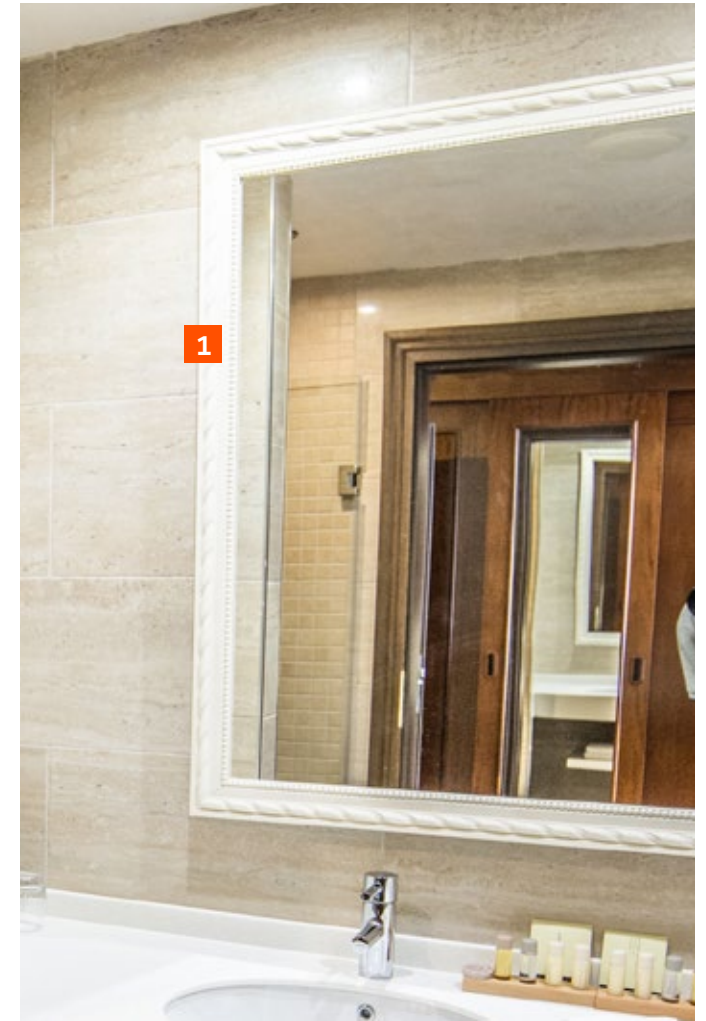


3 Cornice
1.50.197

4 Moulding
1.51.307



5 Cornice
1.50.136



1 Moulding
1.51. 314



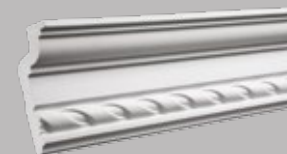
1 Moulding
1.51.302



2 Moulding corner
1.52.290



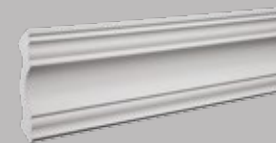
3 Moulding corner
1.52.293



4 Cornice
1.50.119



5 Moulding
1.51.312



1 Moulding
1.51.324

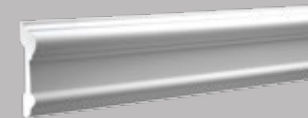
2 Moulding
1.51.326

3 Corbel
1.19.001

4 Moulding
1.51.301

5 Cornice
1.50.113

6 Element
1.54.006



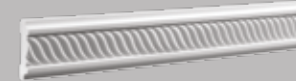
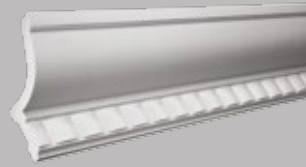
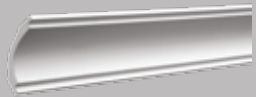
1 Arch frame
1.55.001

2 Arch frame
1.55.002

3 Keystone
1.55.005

4 Arch frame
1.55.003

5 Moulding
1.51.307



1 Cornice
1.50.160

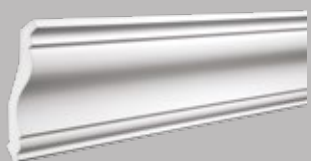
2 Moulding
1.51.401

3 Cornice
1.50.210

4 Floor moulding
1.53.101

5 Moulding
1.51.324

6 Floor moulding
1.53.101

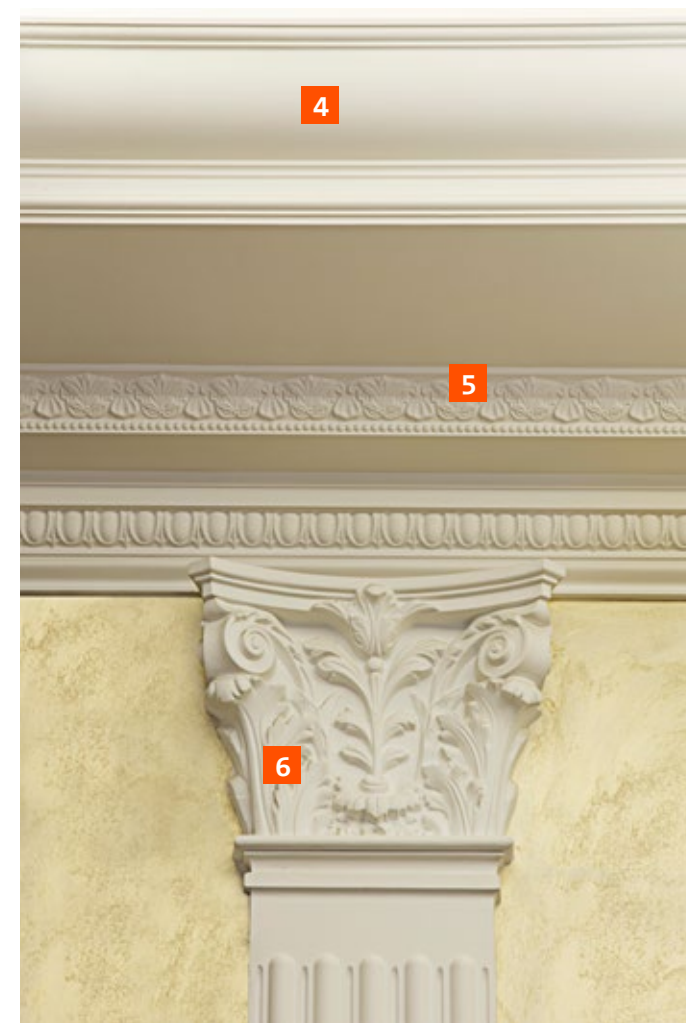
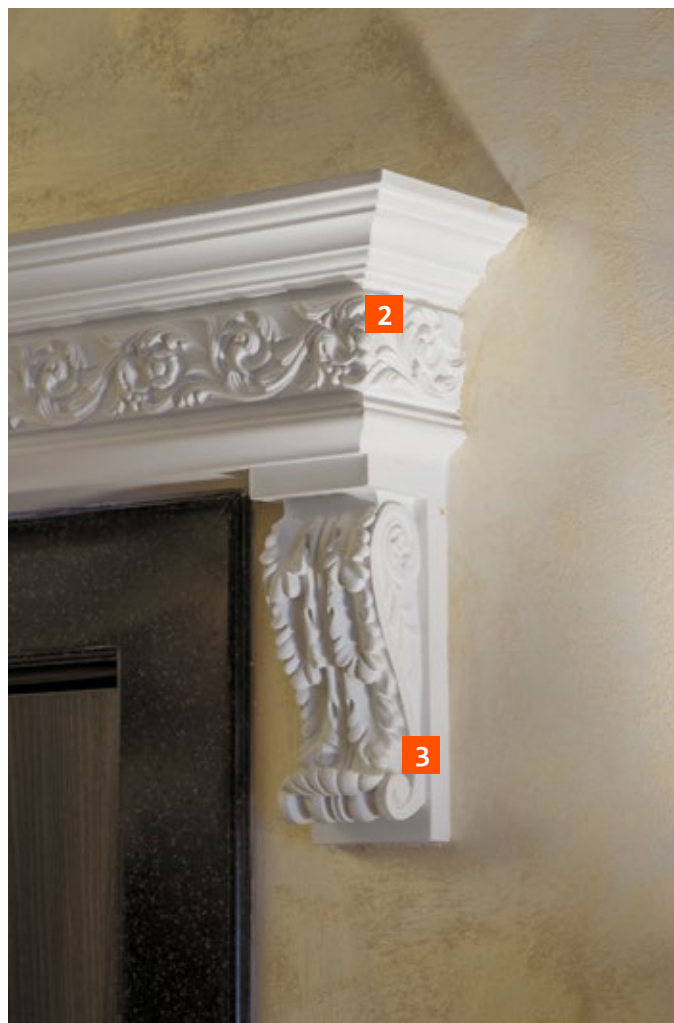
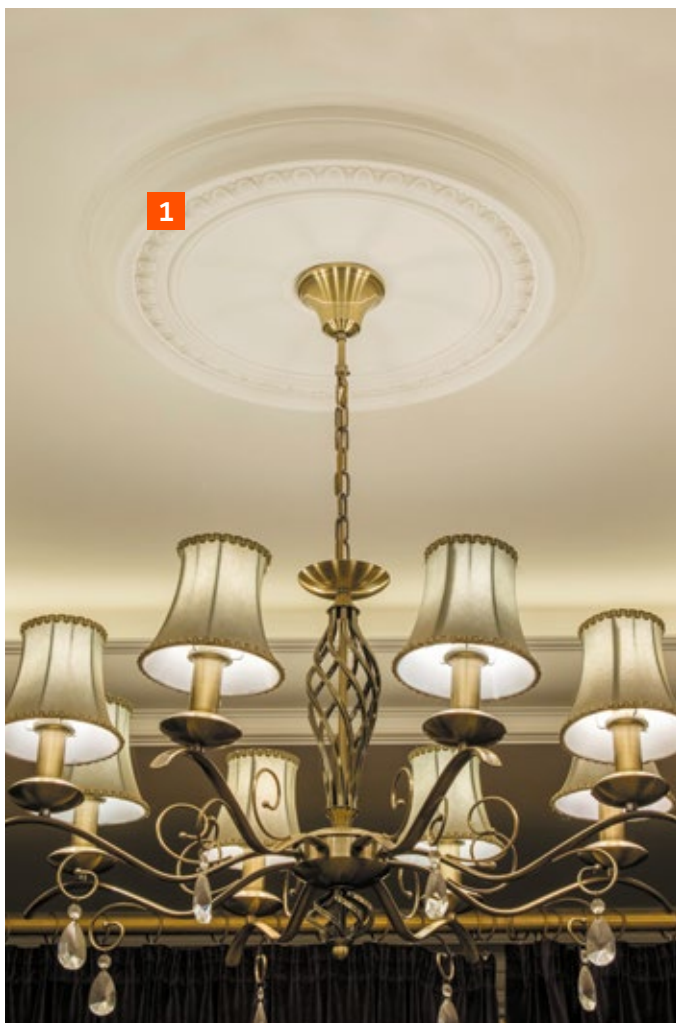


1 Cornice
1.50.133

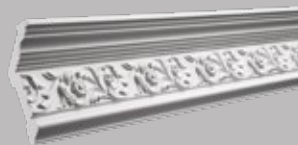


2 Cornice
1.50.125





1 Ceiling rose
1.56.031



2 Cornice
1.50.128



3 Corbel
1.19.004



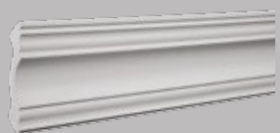
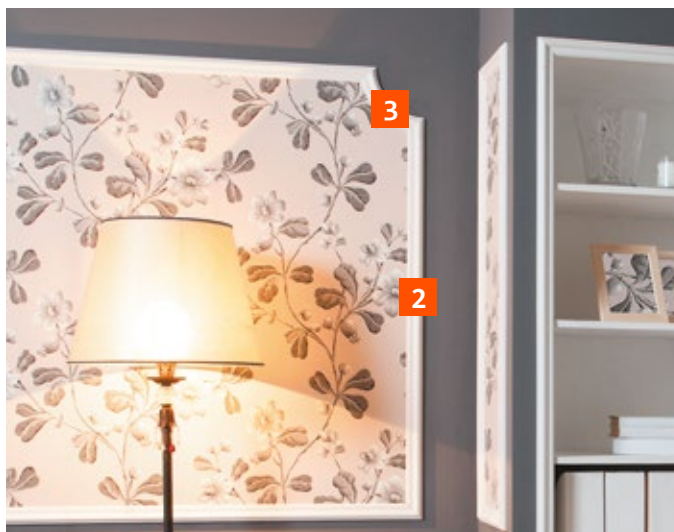
4 Cornice
1.50.209



5 Cornice
1.50.137



6 Capital
1.21.002

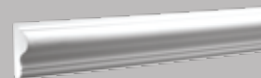


1 Cornice
1.50.113

2 Moulding
1.51.301



3 Moulding corner
1.52.301



4 Moulding
1.51.302



5 Floor moulding
1.53.102



1 Corbel
1.19.002



2 Moulding
1.51.301



1 Platband
1.54.003



6 Ornament
1.60.114



2 Square
1.54.001



7 Ornament
1.60.011
1.60.111



3 Element
1.54.006



8 Ornament
1.60.002



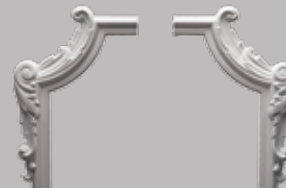
4 Moulding
1.51.317



9 Ornament
1.60.015

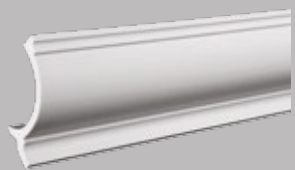
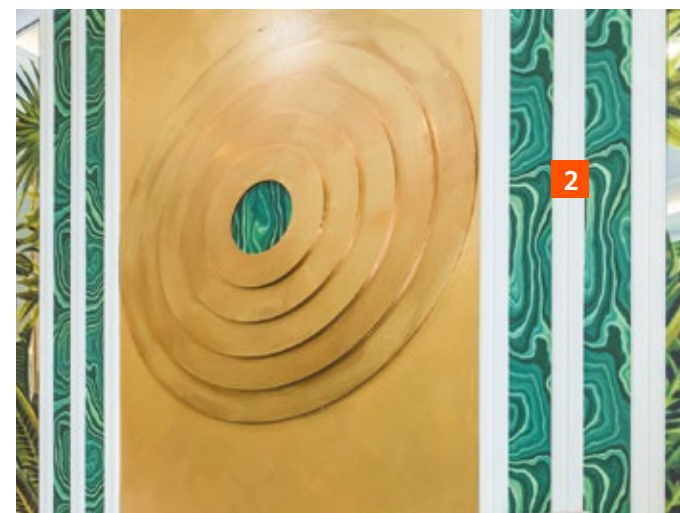


5 Moulding
corner
1.52.290
1.52.293

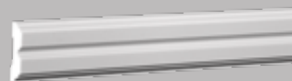


10 Ornament
1.60.009
1.60.109





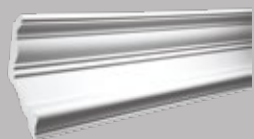
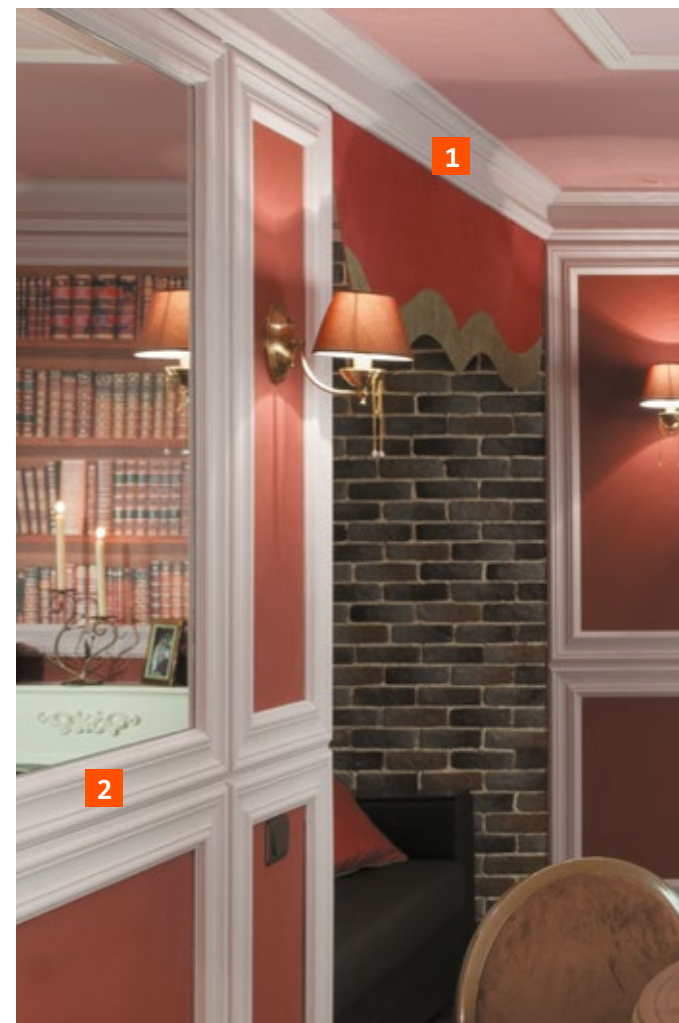
1 Cornice
1.50.261



2 Moulding
1.51.357

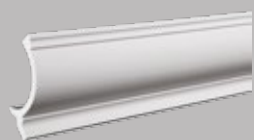


3 Floor moulding
1.53.102

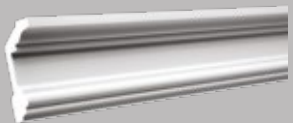


1 Cornice
1.50.132

2 Moulding
1.51.317

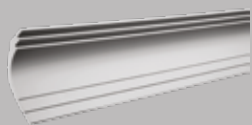


1 Cornice
1.50.261

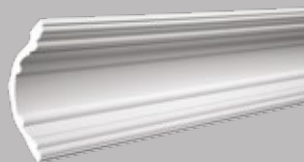


1 Cornice
1.50.121

2 Moulding
1.51.357



1 Cornice
1.50.147



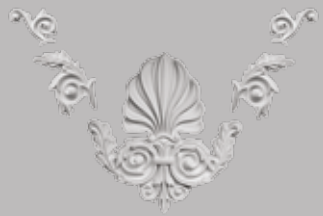
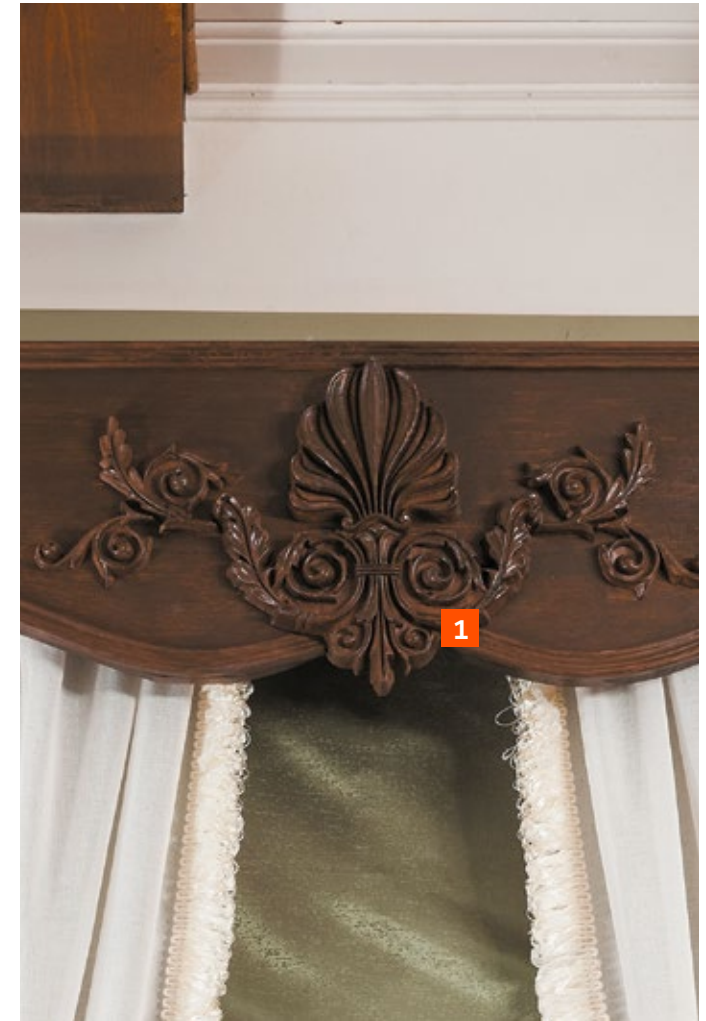
2 Cornice
1.50.168



3 Moulding corner
1.52.290



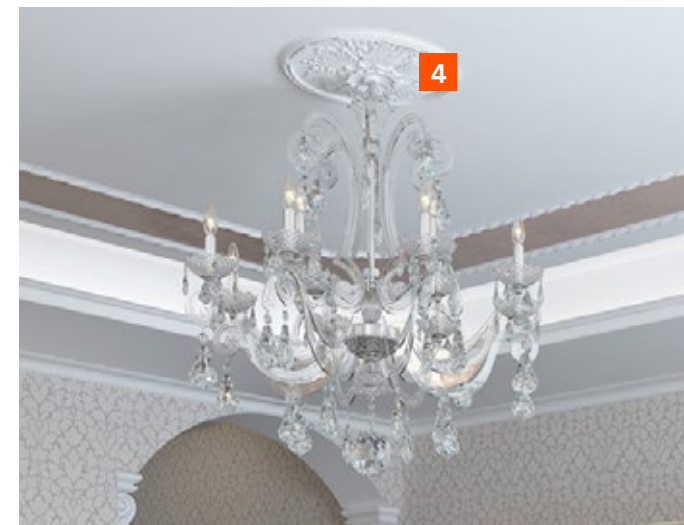
4 Moulding
1.51.301



1 Ornament
1.60.019



2 Flexible Moulding
1.51.321



1 Moulding
1.51.312



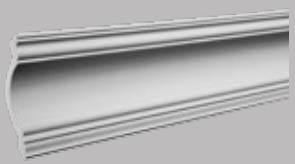
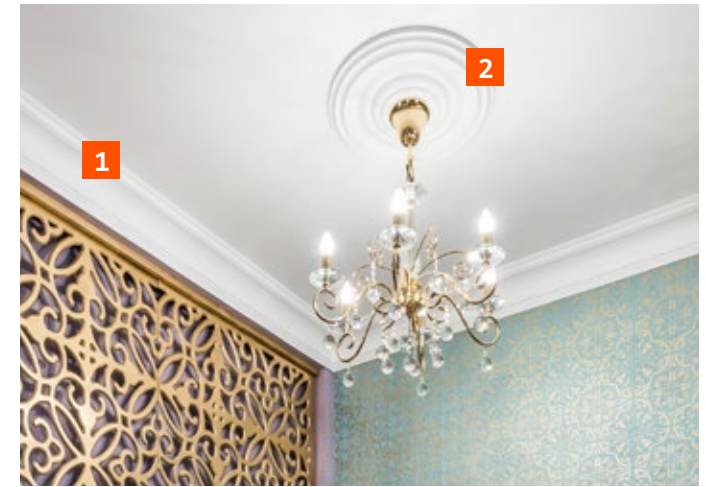
2 Moulding corner
1.52.312



3 Moulding corner
1.52.292



4 Ceiling rose
1.56.022

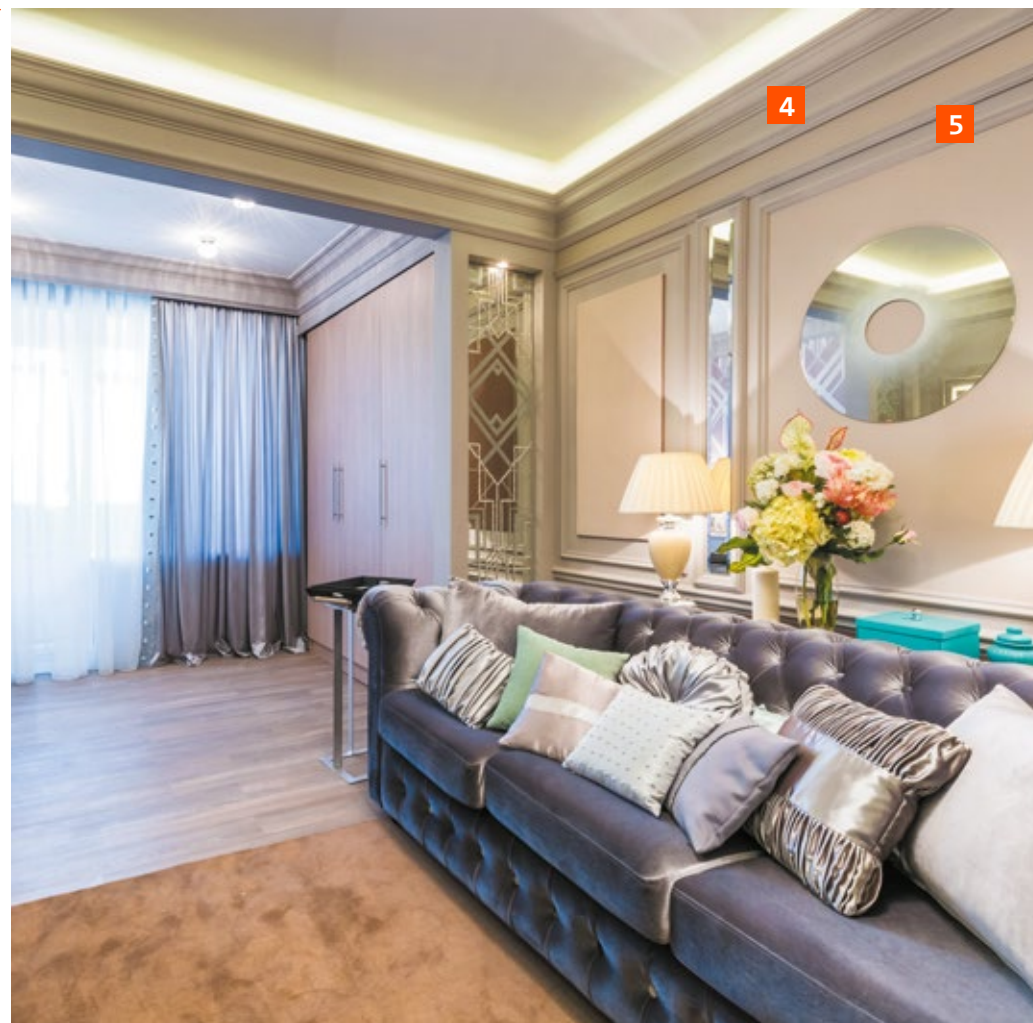


1 Cornice
1.50.117

2 Ceiling rose
1.56.035

3 Moulding
1.51.304

4 Floor moulding
1.53.101



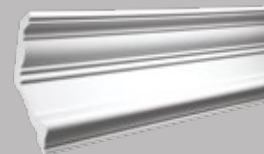
1 Ceiling rose
1.56.014



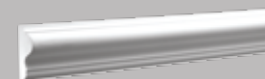
2 Ceiling rose
1.56.021



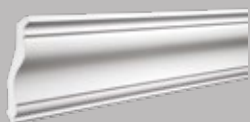
3 Ceiling rose
1.56.017



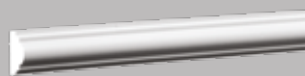
4 Cornice
1.50.132



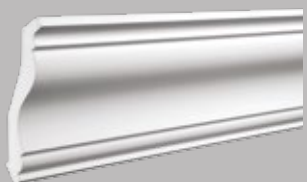
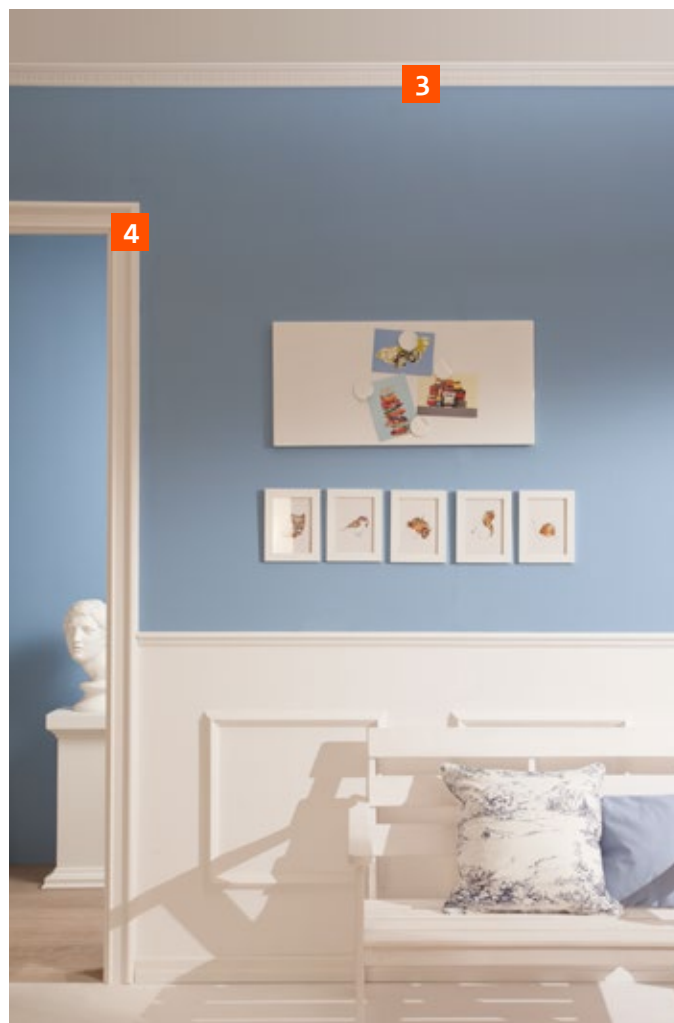
5 Moulding
1.51.302



1 Cornice
1.50.133

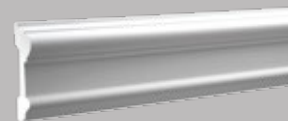


2 Moulding
1.51.322



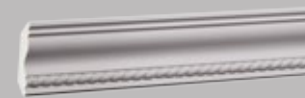
1 Cornice
1.50.133

2 Floor moulding
1.53.105



3 Cornice
1.50.187

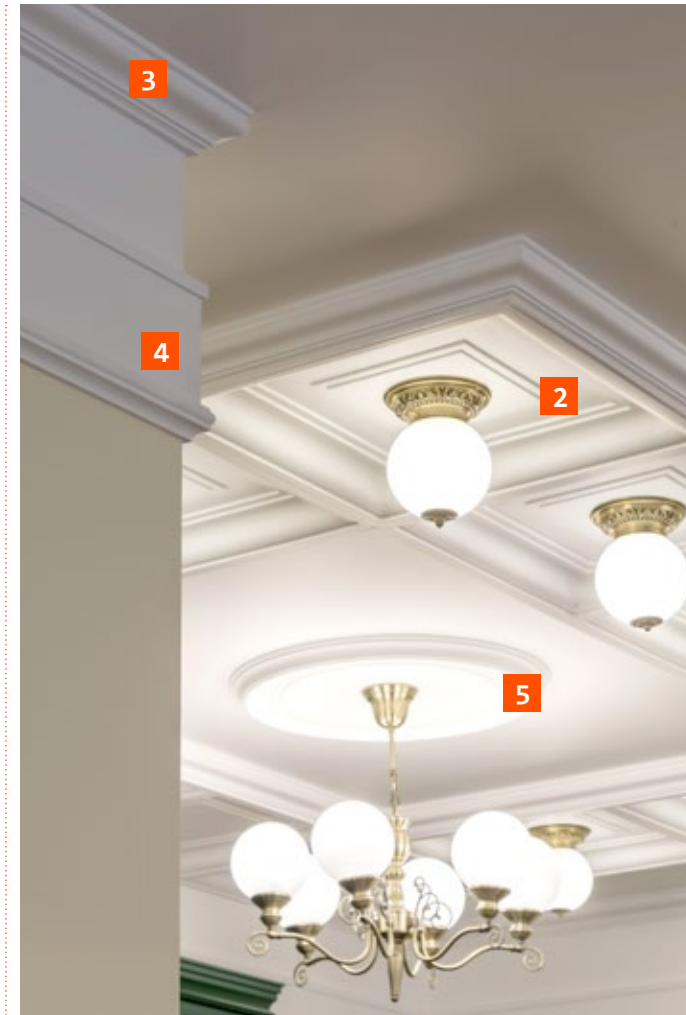
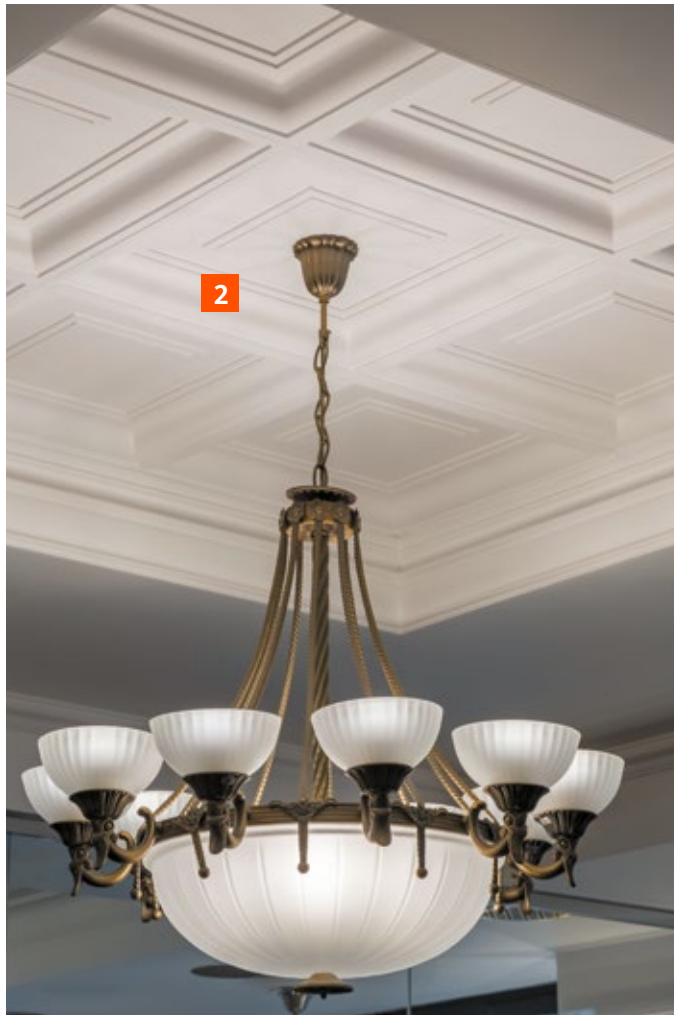
4 Moulding
1.51.307



5 Cornice
1.50.194

6 Floor moulding
1.53.105

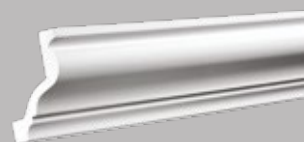




1 Cupola
1.58.001



2 Ceiling panel
1.57.002



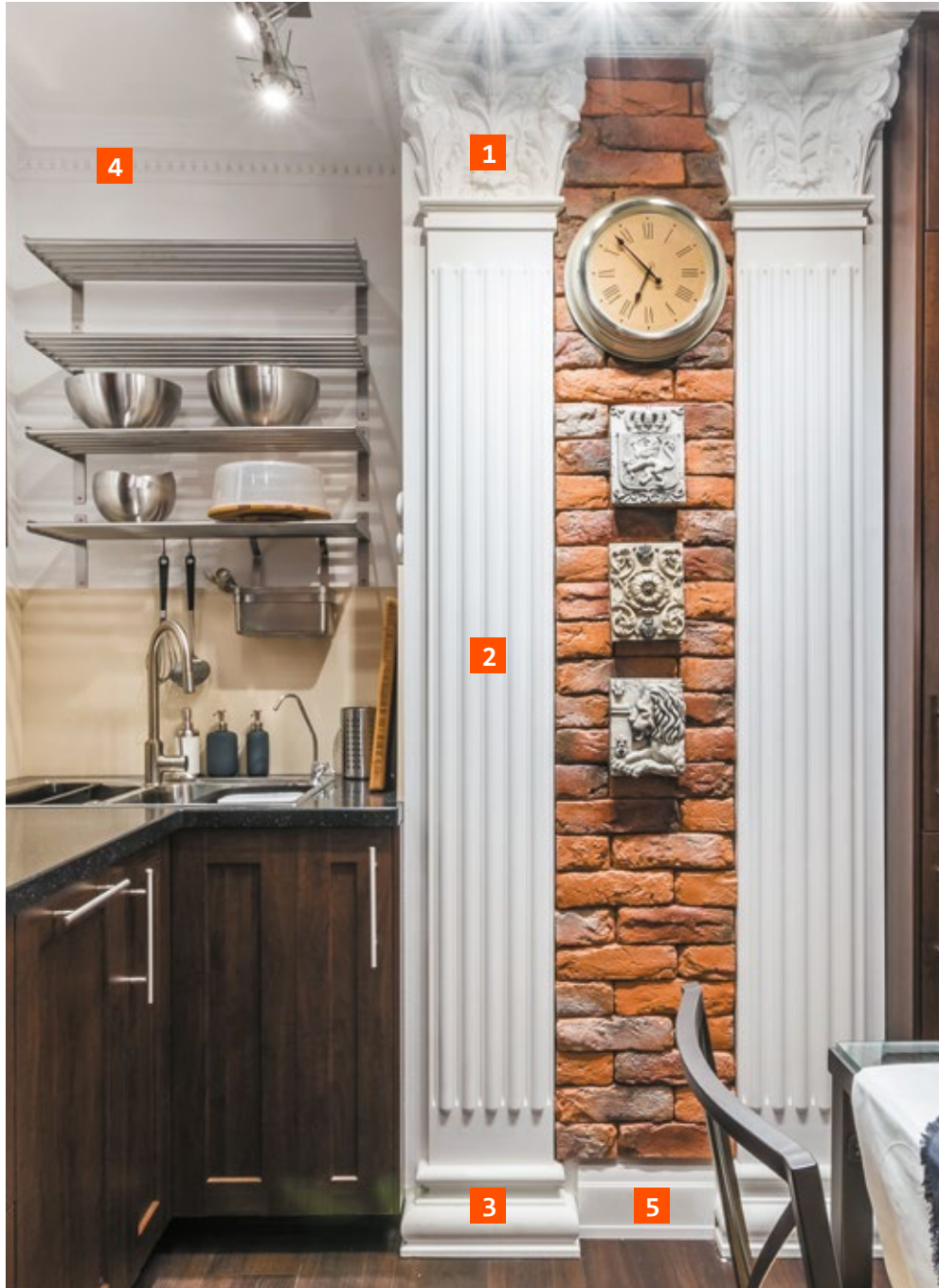
3 Cornice
1.50.129



4 Moulding
1.51.381



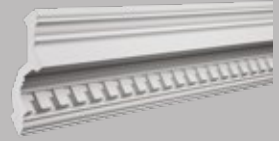
5 Ceiling rose
1.56.044



1 Capital
1.21.002



4 Cornice
1.50.111



2 Column shaft
1.22.200

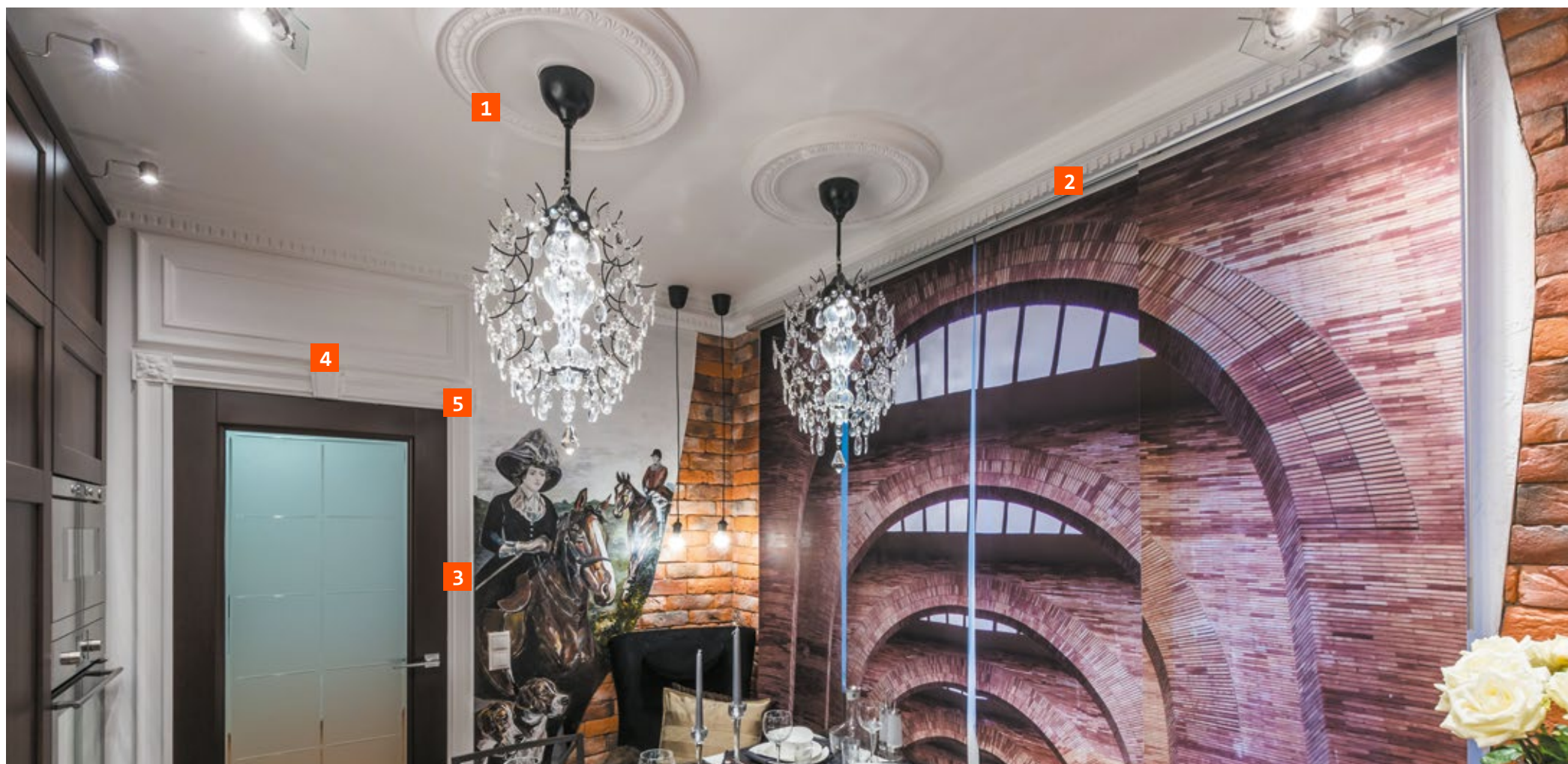


5 Floor
moulding
1.53.102



3 Base
1.23.200

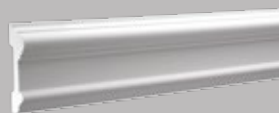




1 Ceiling rose
1.56.031



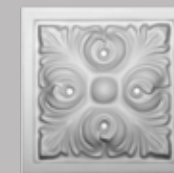
2 Cornice
1.50.111



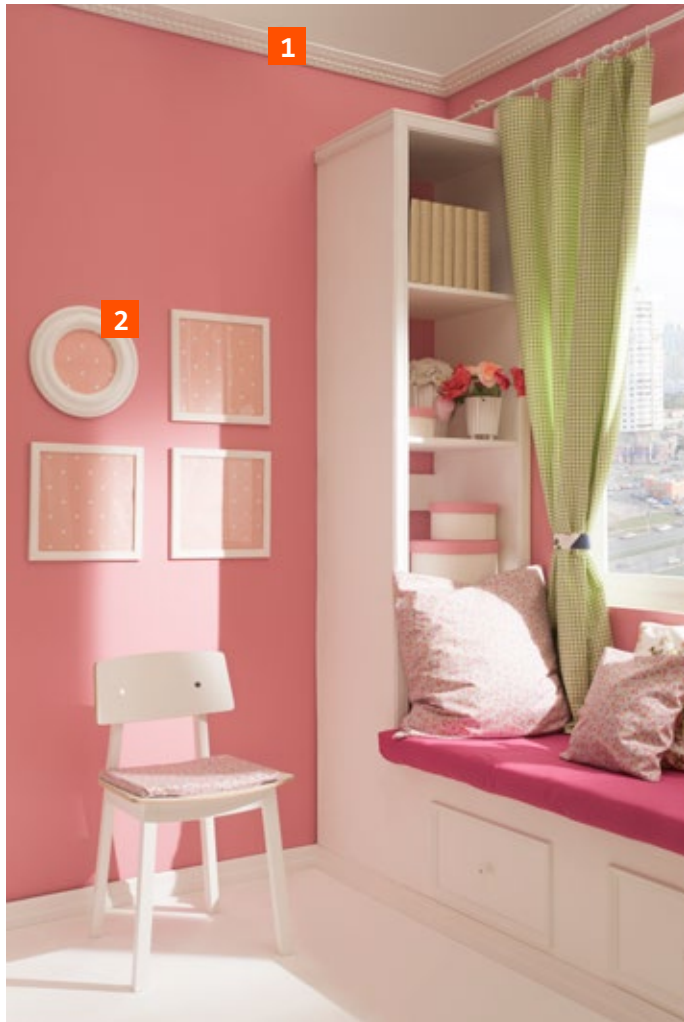
3 Moulding
1.51.307



4 Keystone
1.55.005

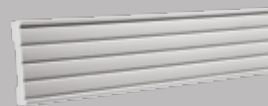
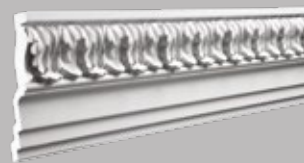


5 Square
1.54.002



1 Cornice
1.50.196

2 Ceiling rose
1.56.006



3 Cornice
1.50.136

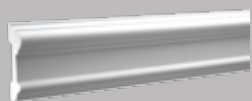
4 Moulding
1.51.316



5 Moulding
1.51.340



6 Floor moulding
1.53.102



1 Moulding
1.51.307



2 Arch frame
1.55.003



3 Platband
1.54.003



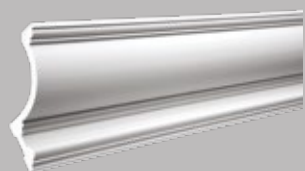
4 Element
1.54.008



5 Element
1.54.009



6 Element
1.54.019



1 Cornice
1.50.209



2 Cornice
1.50.137



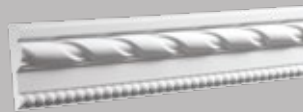
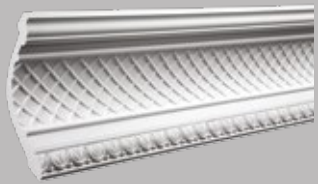
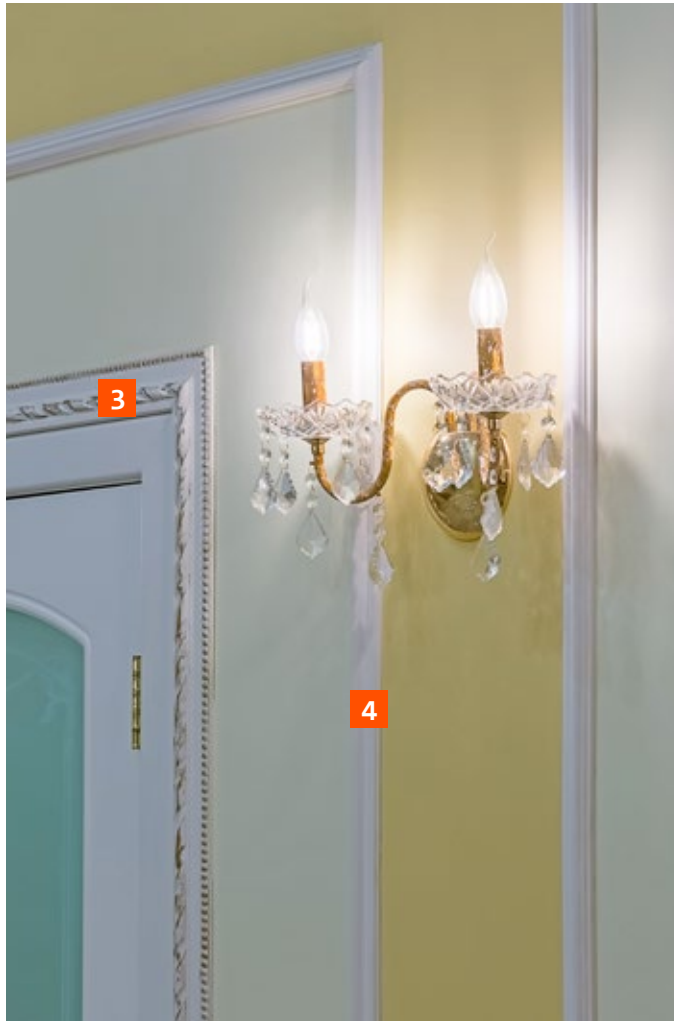
1 Moulding
1.51.301

2 Moulding corner
1.52.301

3 Ceiling rose
1.56.010

4 Moulding
1.51.343

5 Floor moulding
1.53.102



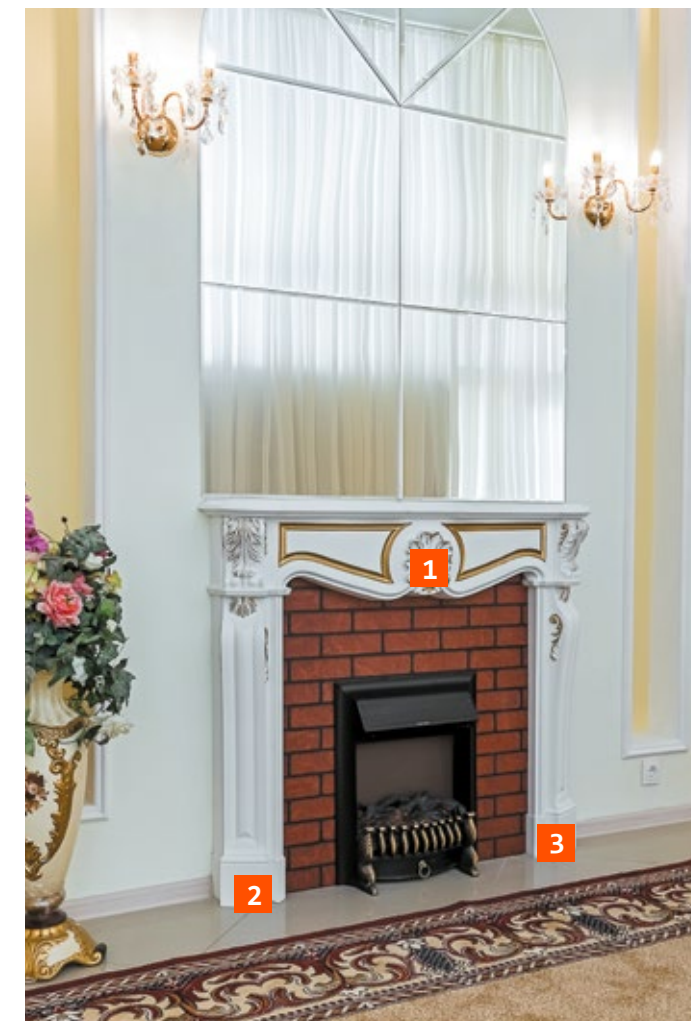
1 Cornice
1.50.138

2 Moulding
1.51.320

3 Moulding
1.51.314

4 Moulding
1.51.302

5 Moulding
1.51.301



1 Decorative
mantelpiece
Element
1.64.001



2 Decorative
mantelpiece
Element
1.64.002



3 Decorative
mantelpiece
Element
1.64.003



1 Capital
1.21.002



2 Column shaft
1.22.200



3 Base
1.23.200



1 Moulding
1.51.325



5 Capital
4.15.302



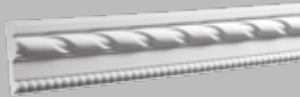
2 Moulding
1.51.321



6 Column shaft
4.16.003



3 Moulding
1.51.314



Column shaft
4.16.004



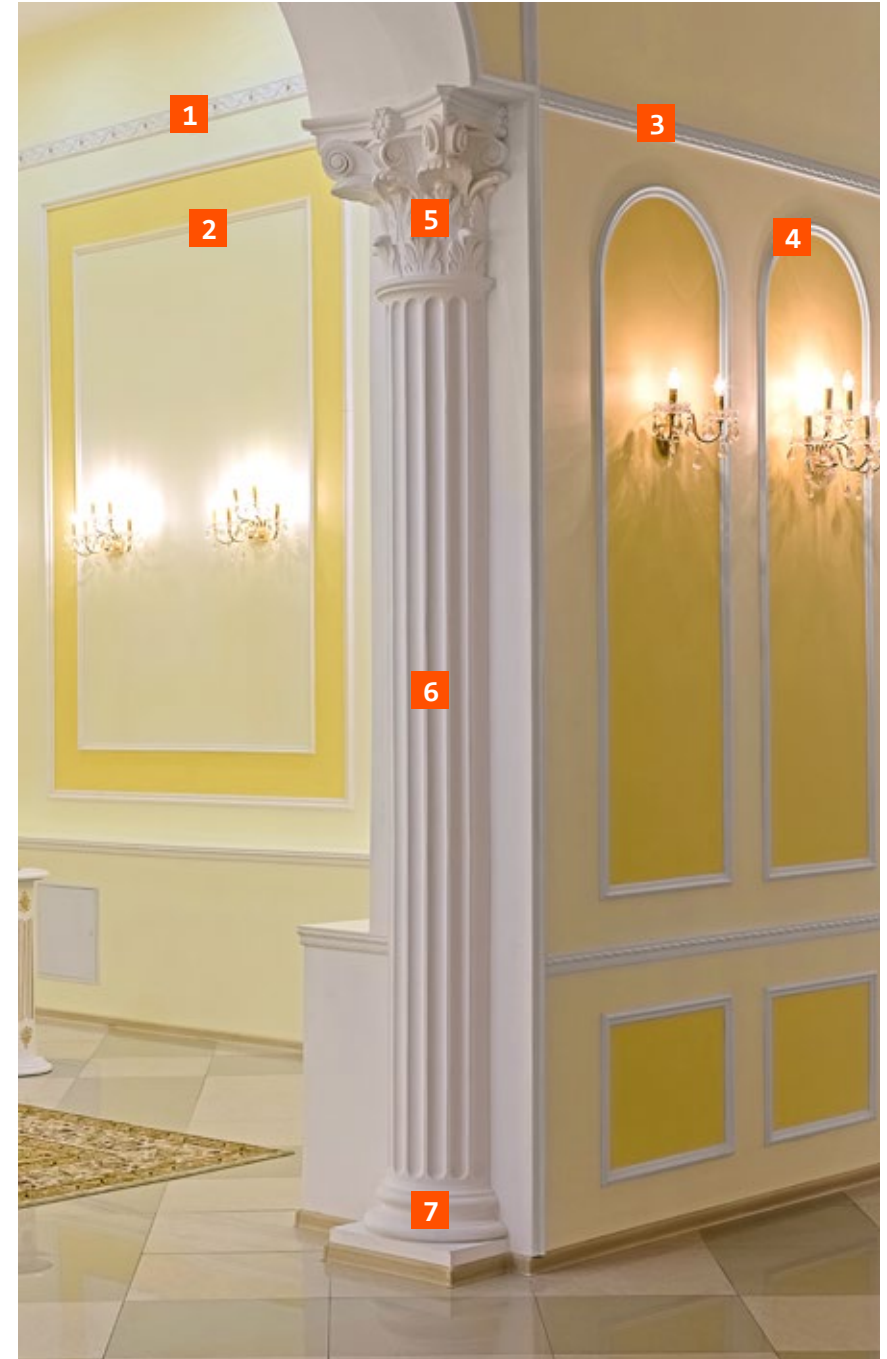
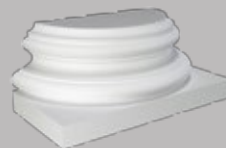
4 Flexible Moulding
1.51.301

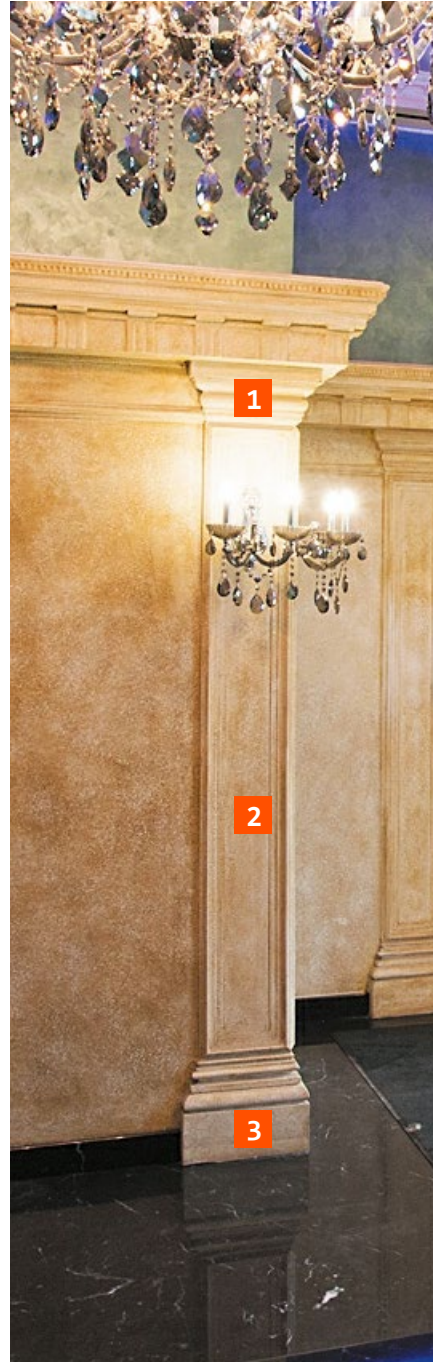


Column shaft
4.16.005



7 Base
4.17.002





1 Capital
1.21.004



2 Column shaft
1.22 .040



3 Base
1.23.400



1 Capital
1.11.002

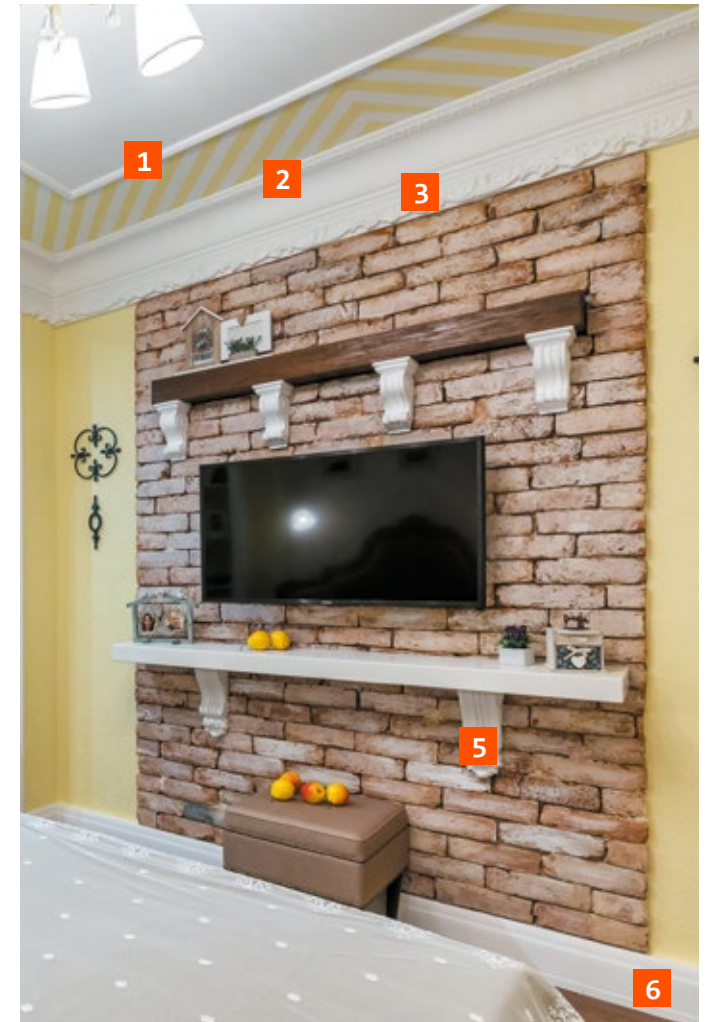


2 Column shaft
1.12.020

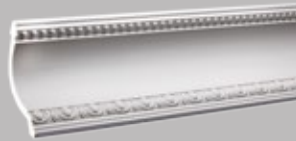


3 Base
1.13.200





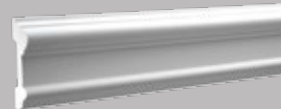
1 Moulding
1.51.308



2 Cornice
1.50.203



3 Moulding
1.51.368



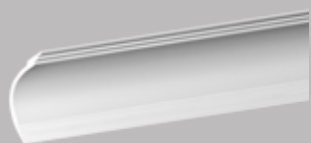
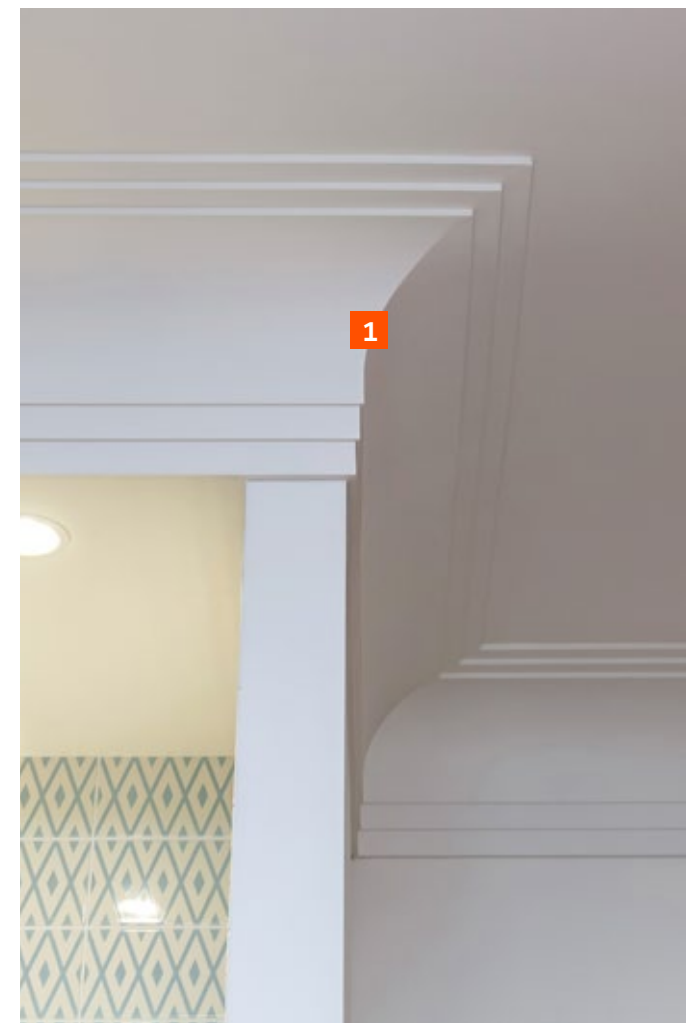
4 Moulding
1.51.307



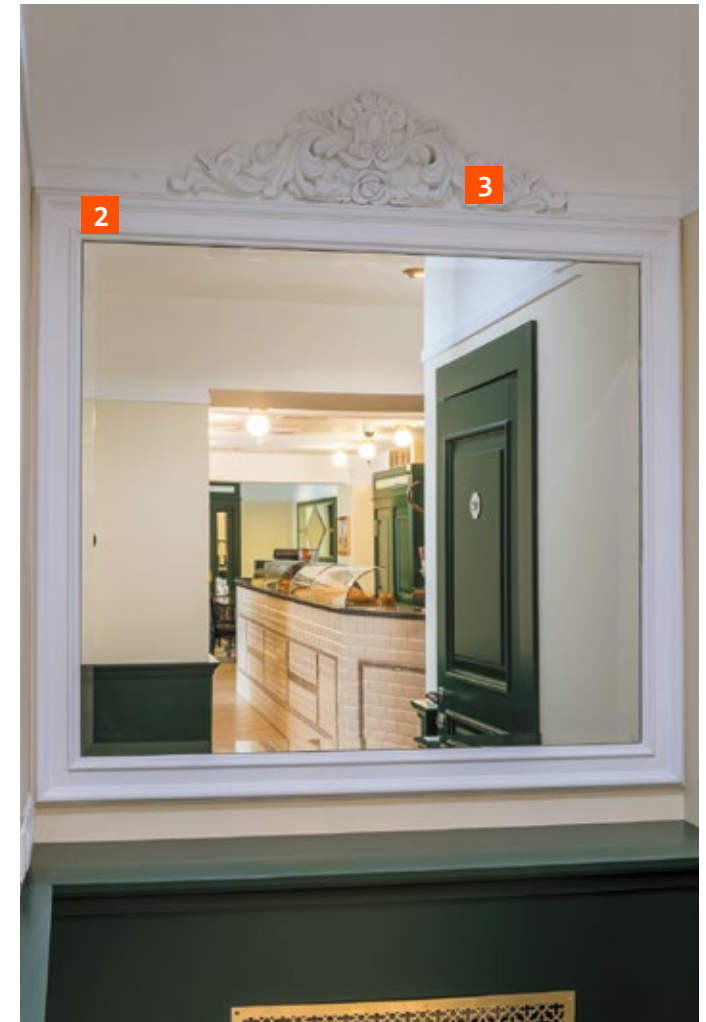
5 Corbel
1.19.002



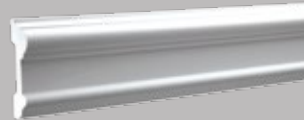
6 Floor moulding
1.53.102



1 Cornice
1.50.271



1 Platband
1.54.014



2 Moulding
1.51.307

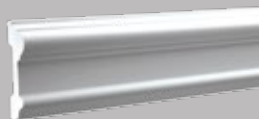


3 Ornament
1.60.021

1 Capital
1.21.005



2 Moulding
1.51.307



3 Moulding
1.51.310



4 Base
1.23.500





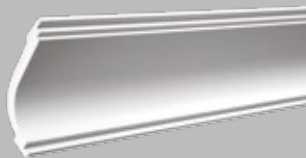
1 Capital
1.11.004



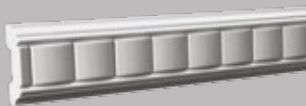
2 Column shaft
1.12.011



1 Cornice
1.50.170



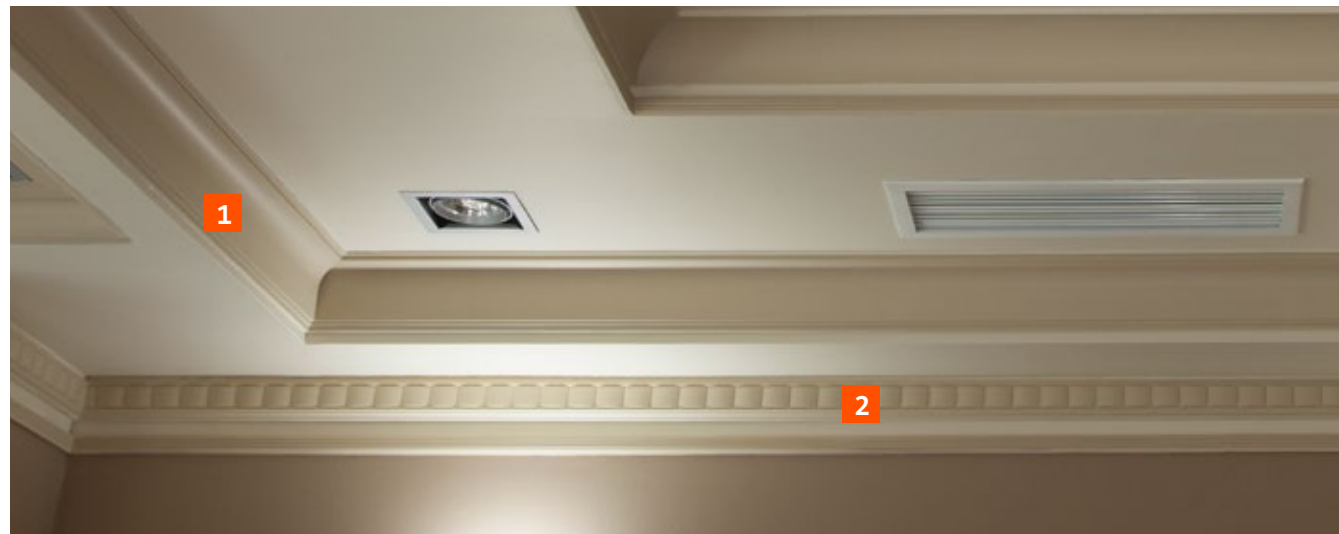
2 Moulding
1.51.309



3 Capital
1.21.004



4 Column shaft
1.22.040





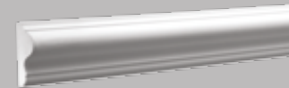
1 Cornice
1.50.137



2 Corbel
1.19.137



3 Moulding
1.51.302



4 Cornice
1.50.112

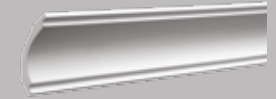


5 Column shaft
1.22.020





1 Cornice
1.50.160



2 Capital
1.21.006

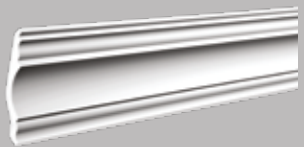


3 Column shaft
1.22.020

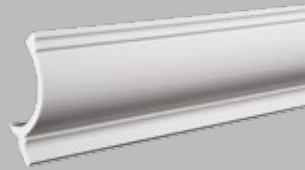


4 Base
1.23.200

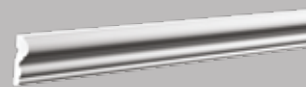




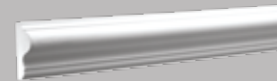
1 Cornice
1.50.139



2 Cornice
1.50.261



3 Moulding
1.51.400



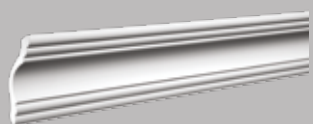
4 Moulding
1.51.302



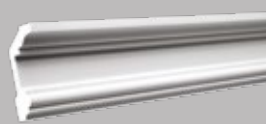
5 Moulding
1.51.321



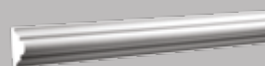
6 Floor moulding
1.53.101



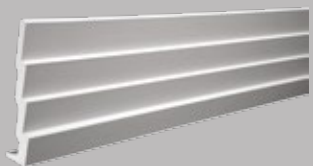
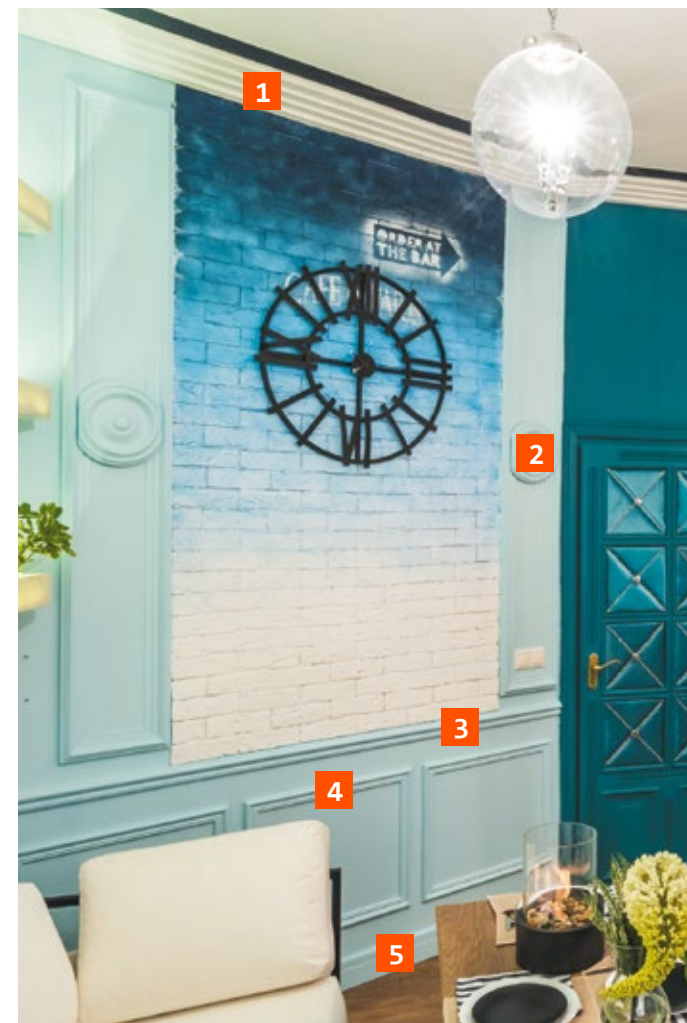
1 Cornice
1.50.102



2 Cornice
1.50.121



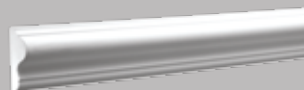
3 Moulding
1.51.308



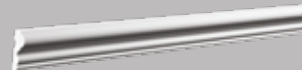
1 Cornice
1.50.142



2 Ceiling rose
1.56.013



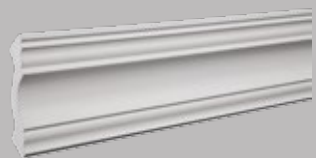
3 Moulding
1.51.302



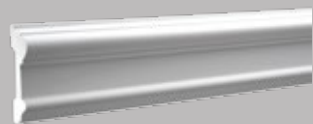
4 Moulding
1.51.400



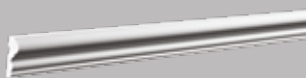
5 Floor moulding
1.53.103



1 Cornice
1.50.113



2 Moulding
1.51.307



3 Moulding
1.51.400



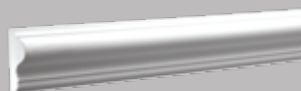
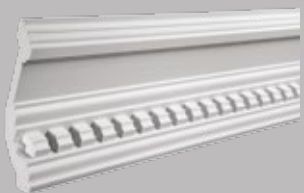
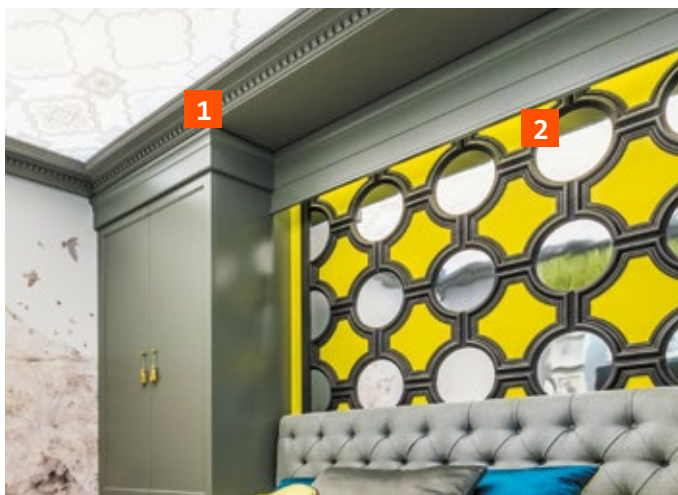
4 Base
1.54.010



5 Floor moulding
1.53.103



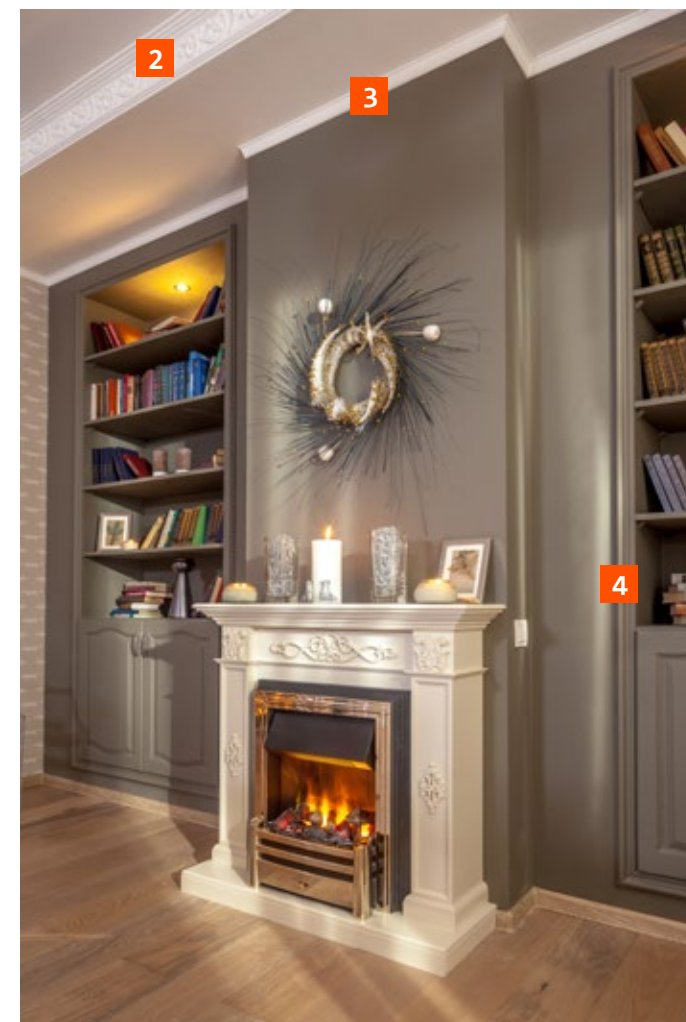
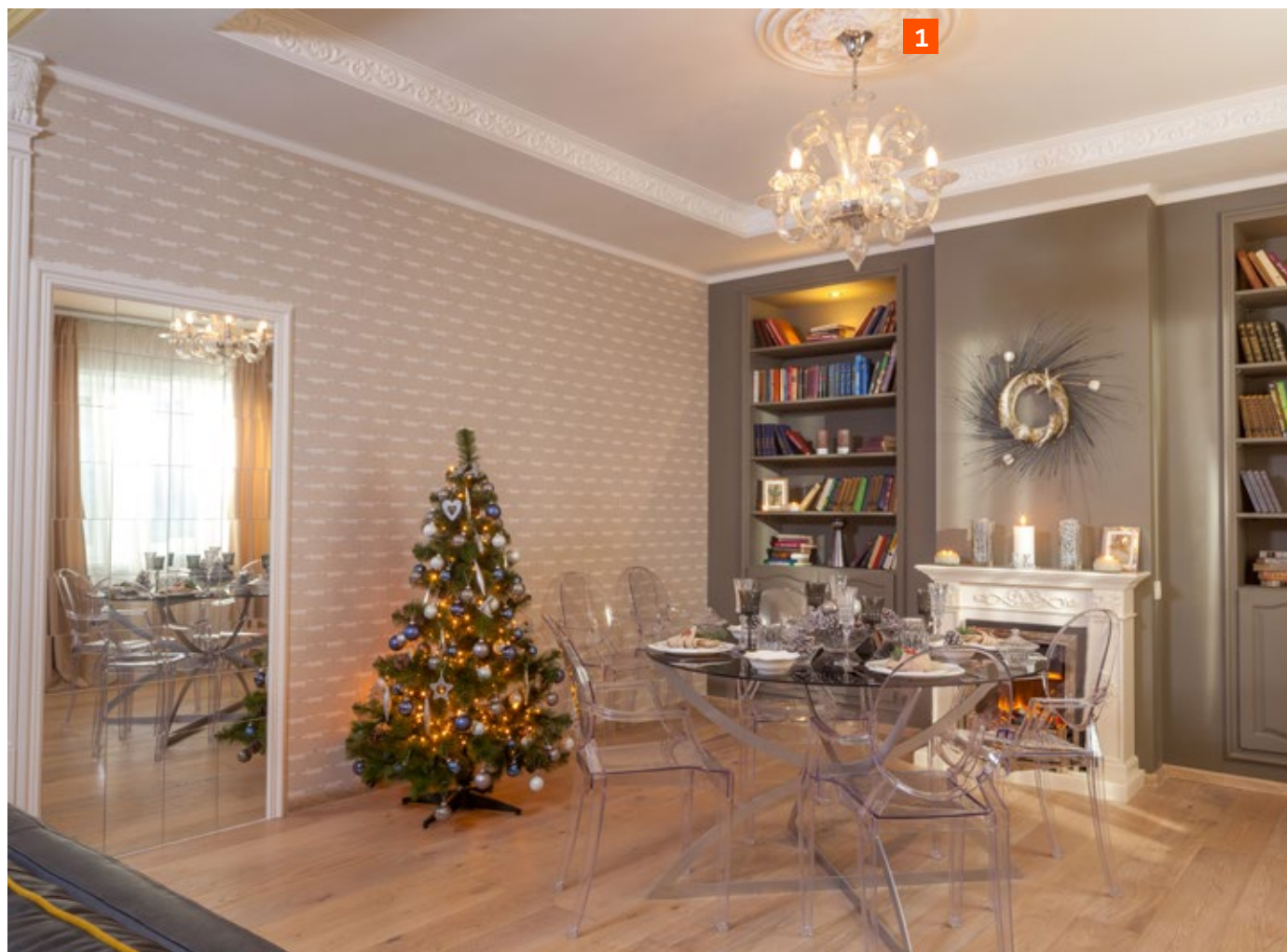
6 Floor moulding
1.53.101



1 Cornice
1.50.109

2 Moulding corner
1.52.302

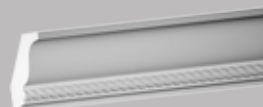
3 Moulding
1.51.302



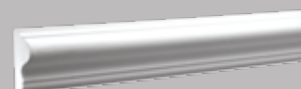
1 Ceiling rose
1.56.001



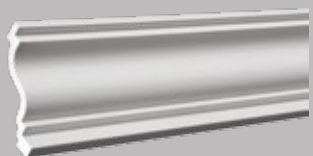
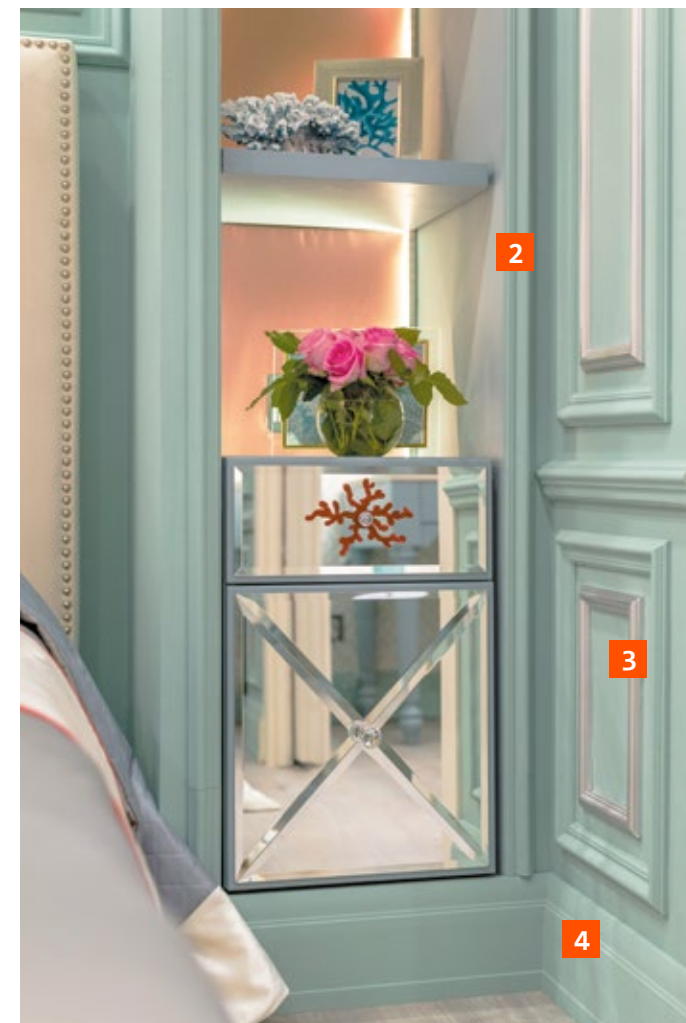
2 Cornice
1.50.163



3 Cornice
1.50.191



4 Moulding
1.51.302



1 Cornice
1.50.126



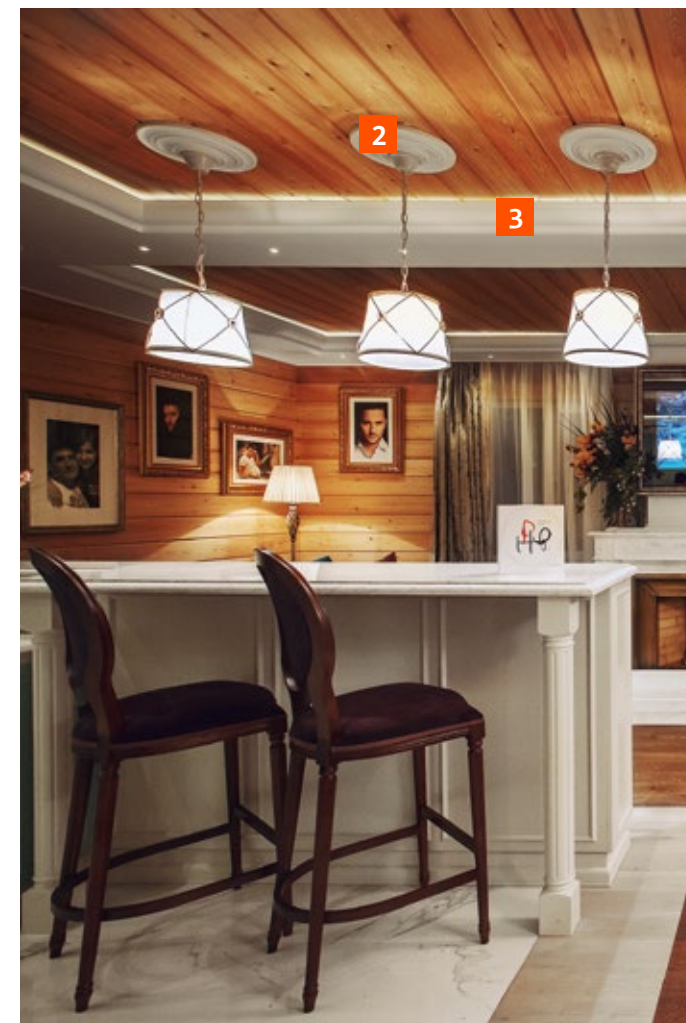
2 Moulding
1.51.301



3 Moulding
1.51.322



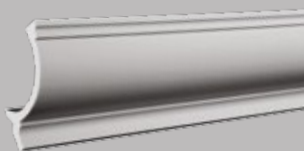
4 Floor moulding
1.53.102



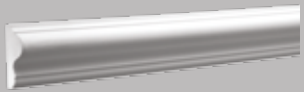
1 Ceiling rose
1.56.018



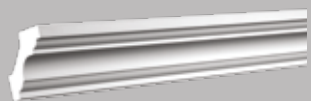
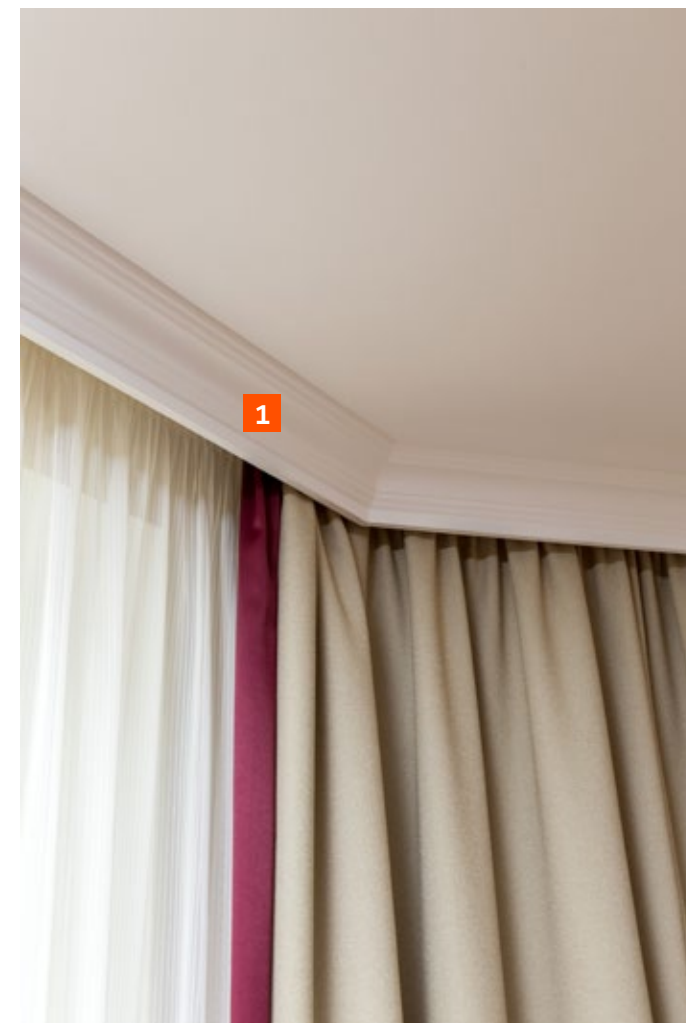
2 Ceiling rose
1.56.014



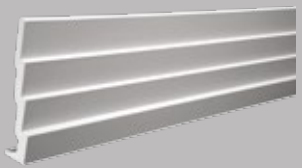
3 Cornice
1.50.261



1 Moulding
1.51.302



1 Cornice
1.50.115



1 Cornice
1.50.142



1 Moulding
1.51.347



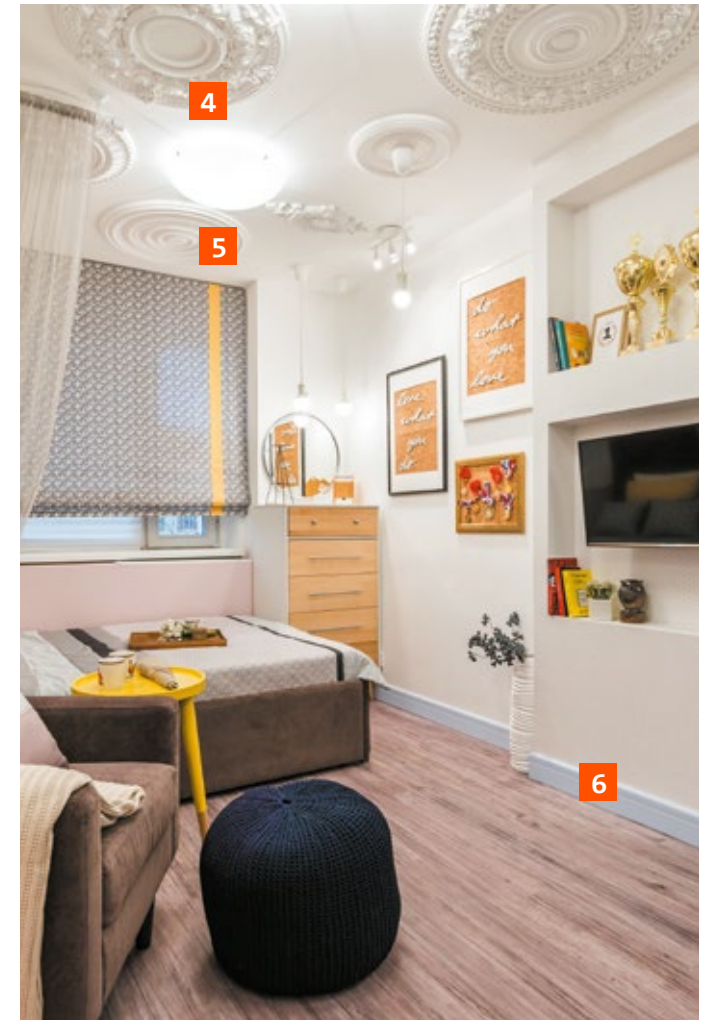
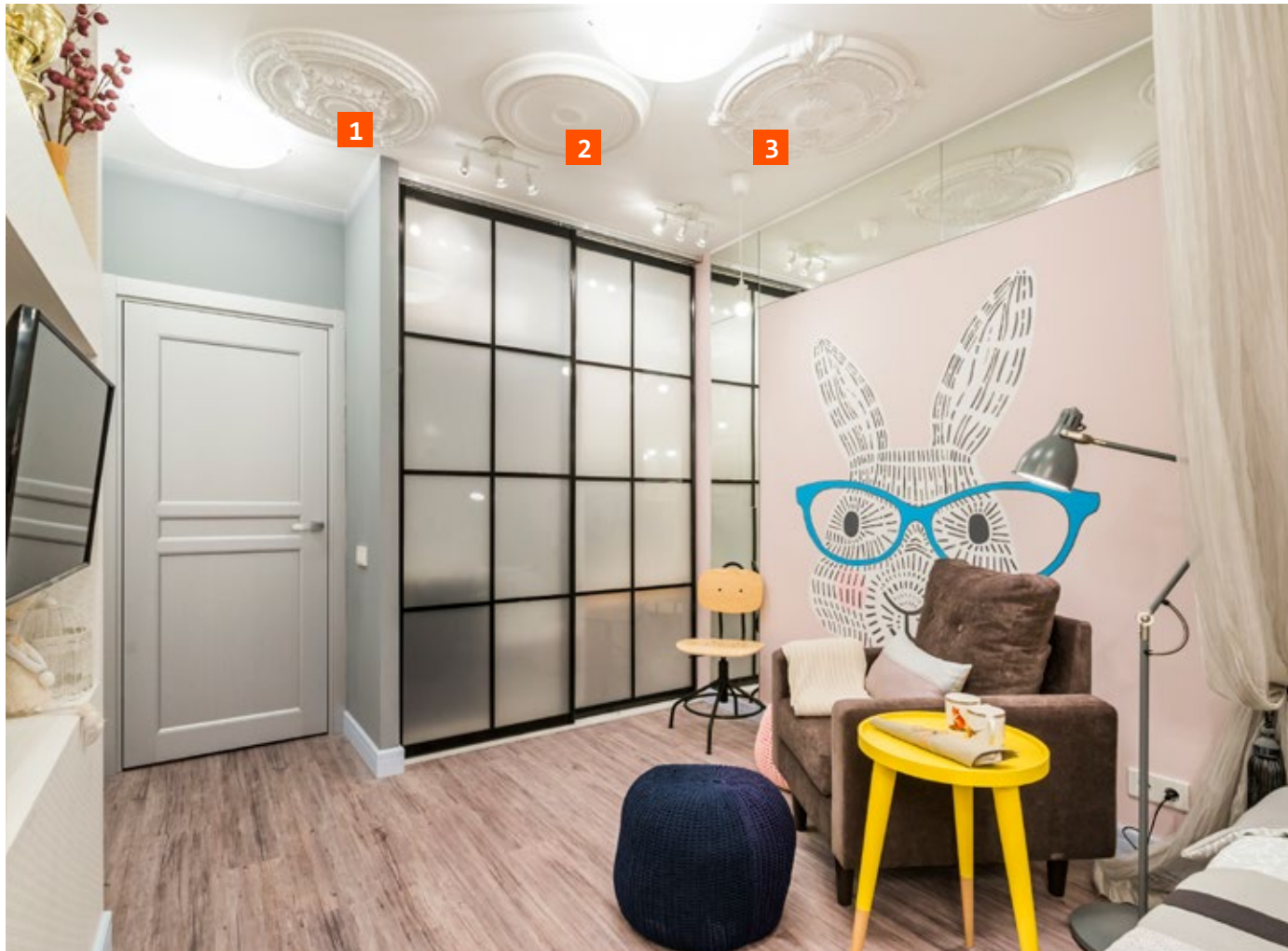
2 Moulding
1.51.302



3 Moulding
1.51.301



4 Floor moulding
1.53.103



1 Ceiling rose
1.56.039



2 Ceiling rose
1.56.031



3 Ceiling rose
1.56.026



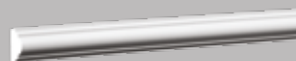
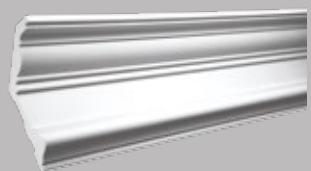
4 Ceiling rose
1.56.040



5 Ceiling rose
1.56.018



6 Floor moulding
1.53.103

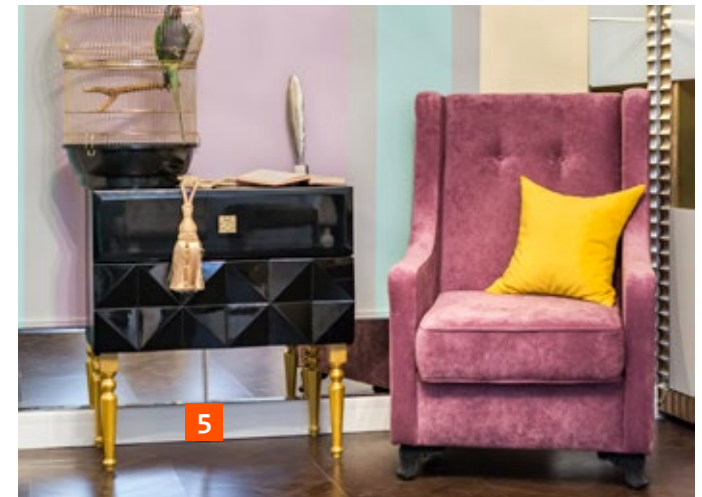


1 Cornice
1.50.132

2 Moulding
1.51.322

3 Moulding
1.51.301

4 Floor moulding
1.53.110



1 Moulding
1.51.327



2 Moulding
1.51.378



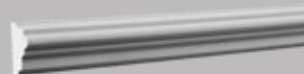
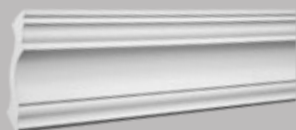
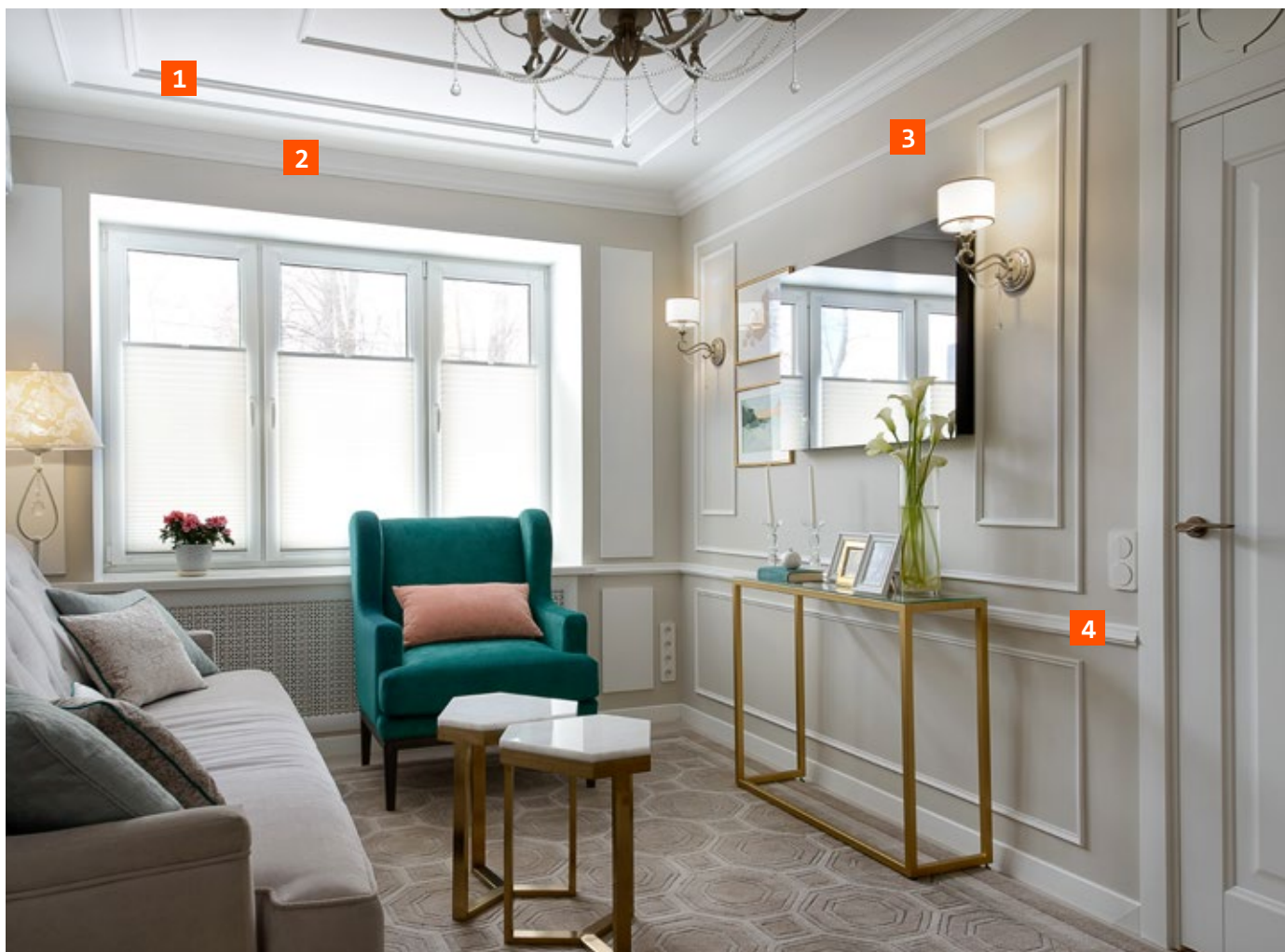
3 Cornice
1.50.262



4 Moulding
1.51.323



5 Floor moulding
1.53.103



1 Moulding
1.51.346

2 Cornice
1.50.113

3 Moulding
1.51.401

4 Moulding
1.51.304



1 Cornice
1.50.108



2 Moulding
1.51.322



3 Ceiling rose
1.56.026



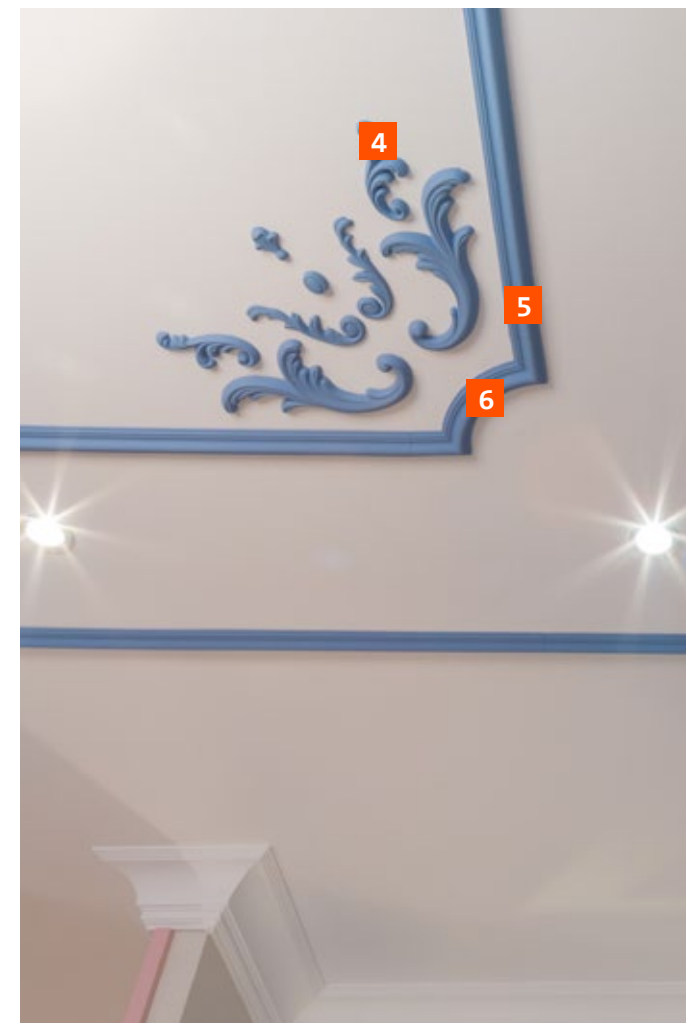
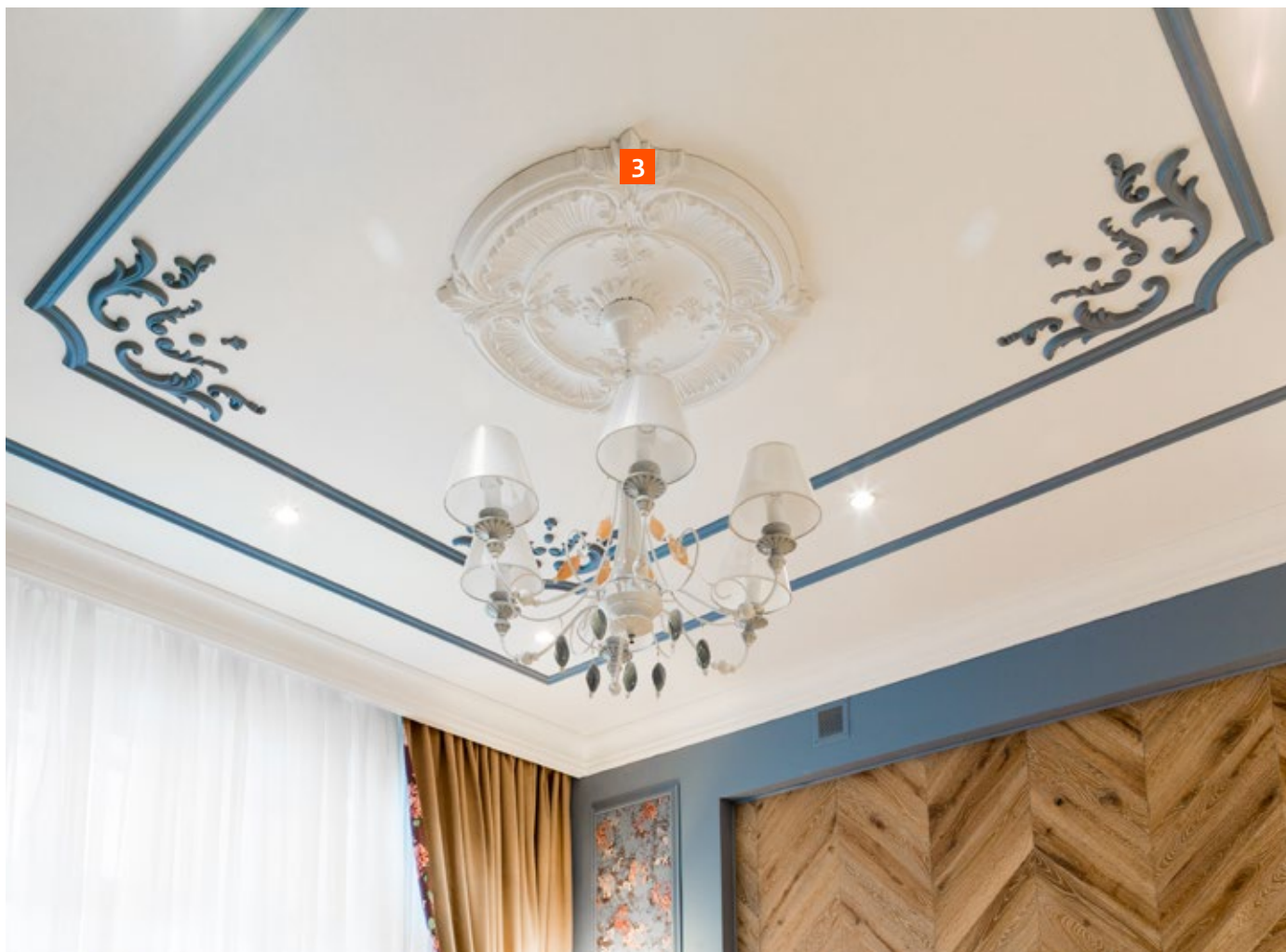
4 Ornament
1.60.111



1.60.003



1.60.004



1.60.020



1.60.120



1.60.109



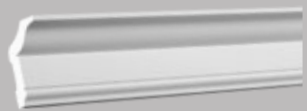
1.60.009



5 Moulding
1.51.301



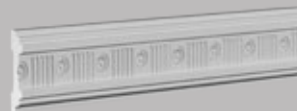
6 Moulding corner
1.52.301



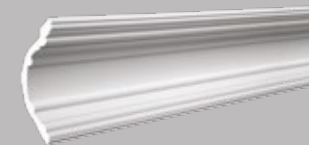
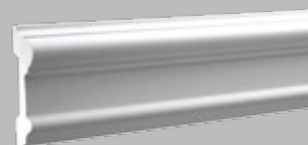
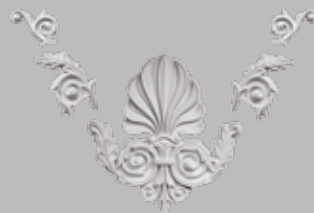
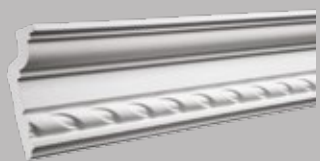
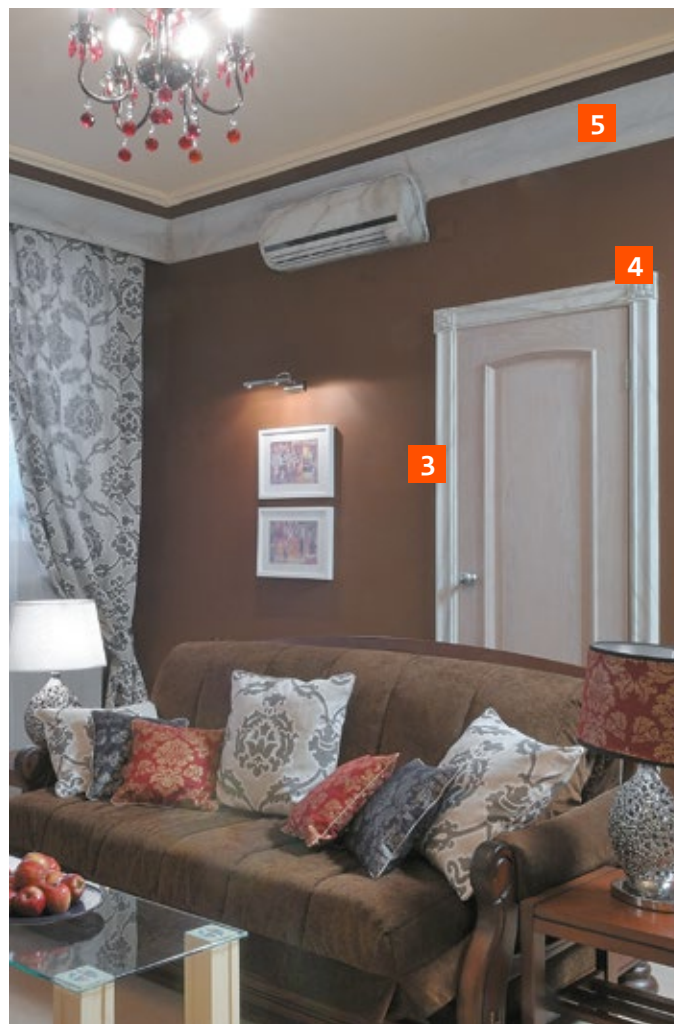
1 Cornice
1.50.174



2 Moulding
1.51.364



3 Moulding
1.51.336



1 Cornice
1.50.119

2 Ornament
1.60.019

3 Moulding
1.51.307

4 Square
1.54.002

5 Cornice
1.50.222

6 Cornice
1.50.168



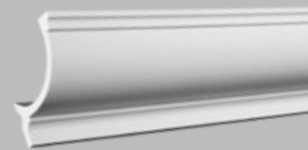
1 Moulding
1.51.301



2 Moulding
1.51.378



3 Moulding corner
1.52.301



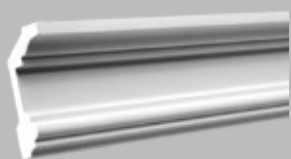
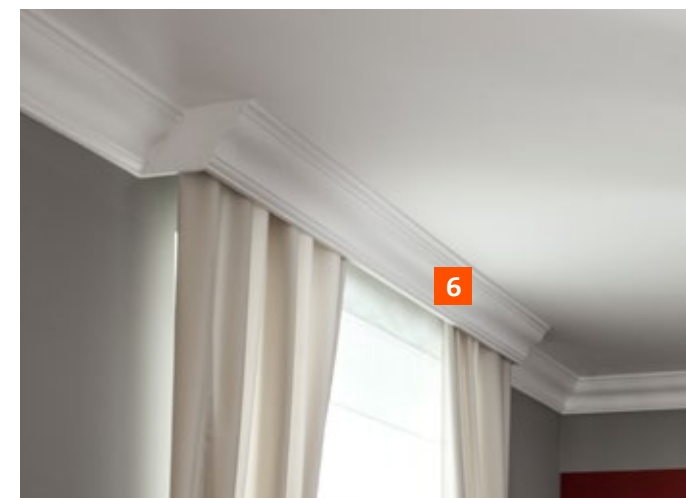
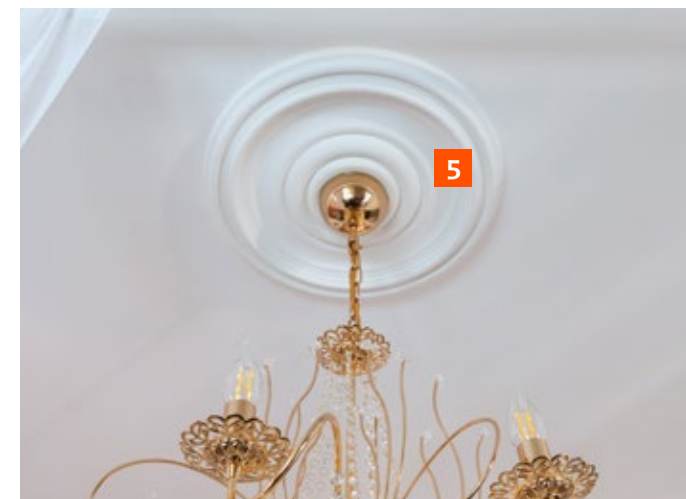
4 Cornice
1.50.261



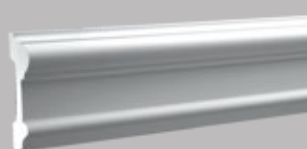
5 Ceiling rose
1.56.013



6 Ceiling rose
1.56.035



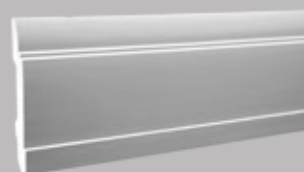
1 Cornice
1.50.121



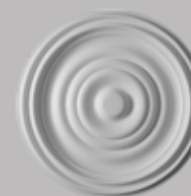
2 Moulding
1.51.307



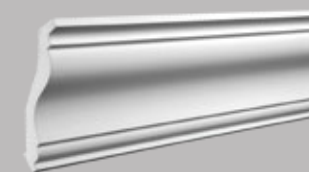
3 Base
1.54.010



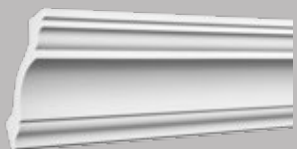
4 Floor moulding
1.53.102



5 Ceiling rose
1.56.035



6 Cornice
1.50.133



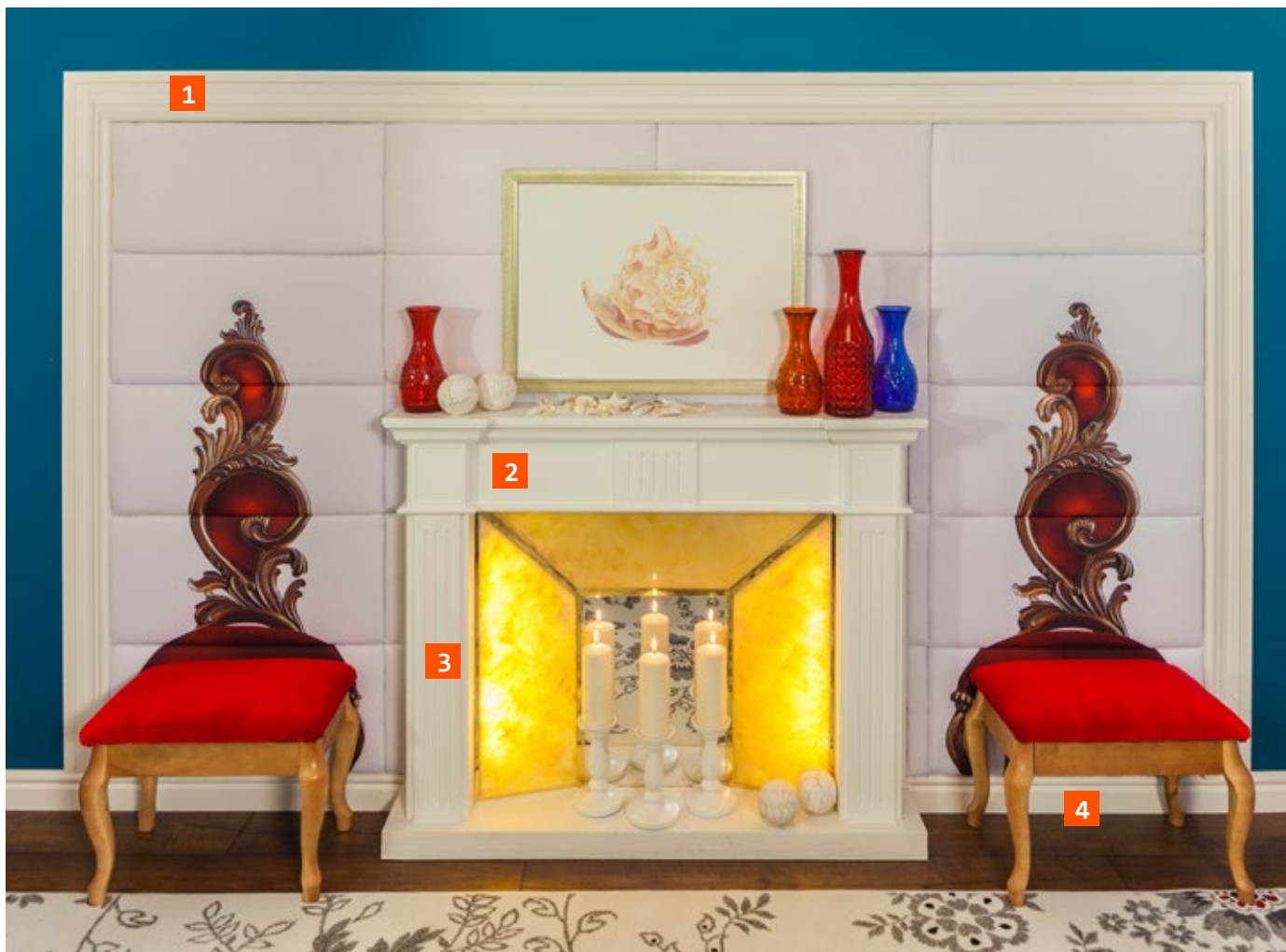
1 Cornice
1.50.113



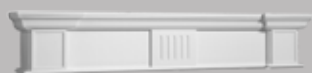
2 Moulding
1.51.323



3 Floor moulding
1.53.103



1 Moulding
1.51.355



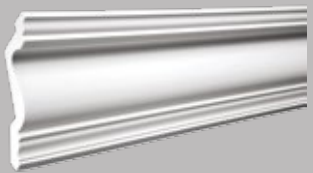
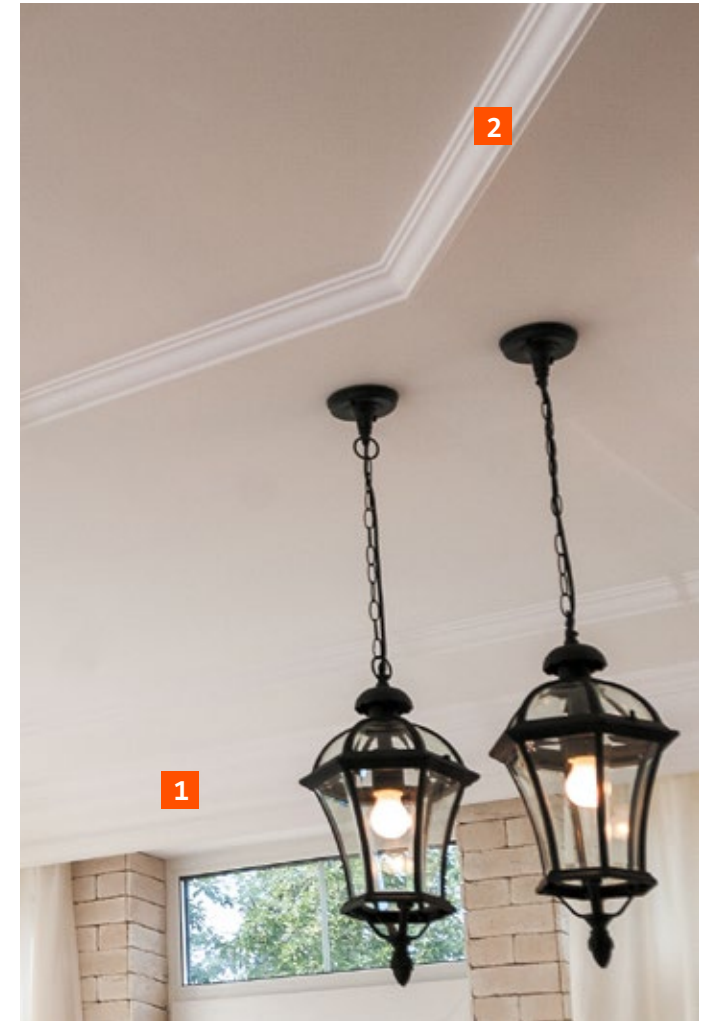
2 Decorative
mantelpiece
Element
1.64.004



3 Decorative
mantelpiece
Element
1.64.005



4 Floor moulding
1.53.109



1 Cornice
1.50.134



2 Cornice
1.50.143